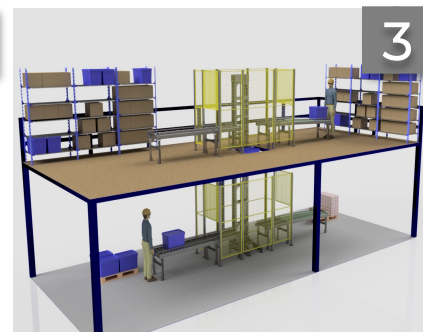
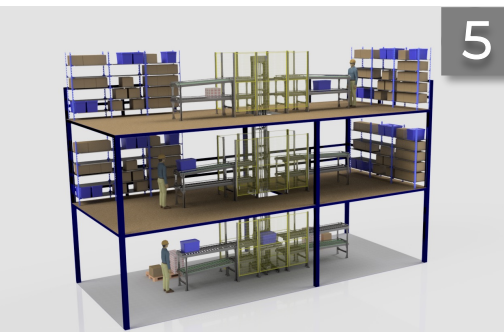
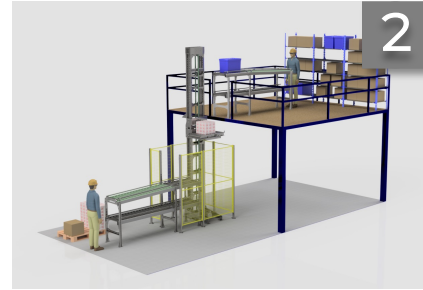
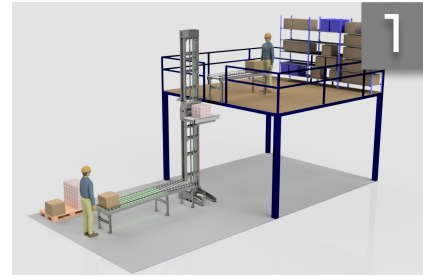




More about vertical conveyors

SOLUTIONS FOR VERTICAL BOX TRANSPORTATION

Automatic vertical conveyors are a strong alternative to freight elevators



The throughput of vertical conveyor solutions:

	Solution	Box weight	Floor height	Throughput
1	1 floor, 1 conveyor level	0.5-35 kg	3.000 mm	365 pph (SC)
2	1 floor, 2 conveyor levels		3.000 mm	525 pph (DC)
3	1 floor, 1 conveyor level		3.000 mm	525 pph (DC)
4	2 floors, 1 conveyor level		3.000 mm, 6.000 mm	525, 406 pph (DC)
5	2 floors, 2 conveyor levels		3.000 mm, 6.000 mm	525, 406 pph (DC)

Single Command (SC) – transport 1 product Up or Down per lifting cycle;
Double Command (DC) – transport 1 product Up and 1 product Down per lifting cycle;
pph – products per hour.

WORKS WITH THE FOLLOWING TYPES AND SIZES OF CONTAINERS:



300x
300x
50 mm

600x
400x
400 mm

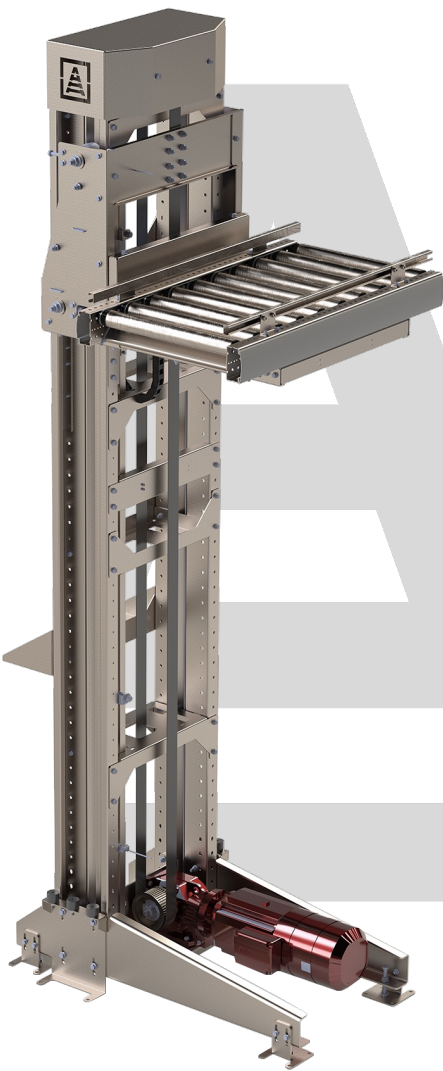
800x
600x
600 mm



More about vertical conveyors

SAFE OPERATION AND INTEGRITY OF THE GOODS DURING TRANSPORTATION

The robust vertical lift is designed specifically to meet the needs of warehouses with high turnover. It is suitable for all types of goods, including fragile ones. The safety system prevents people from being injured during operation.



24/7 work

Works without vacations, lunches and overtime

640 cycles/hour

Maximum productivity

12 000 mm

Maximum working height for transporting boxes

0.75 m²

This is exactly how much storage space this compact lift requires

1 time per year

Minimal maintenance maintenance

100% match

It is consistent with corporate values, predictable and cost-effective

3 kW motor power

Low energy consumption

Comparison of automated and manual box vertical transportation:



Manual process

- 60 boxes/hour
- Additional staff
- Risk of accidents and goods damage

Efficiency **x1**



Automated

- 500 boxes/hour
- Reliability
- Safety

Efficiency **x8**