

# WELCOME TO THE WORLD OF KAPELOU

Solutions that 100% satisfy intralogistics needs

Products & Systems

## **3 ABOUT KAPELOU**

[12 KAPELOU R&D Products & Systems](#)

[14 Robot applications](#)

## **19 BOX CONVEYOR TECHNOLOGY**

[20 Conveyor modules for boxes](#)

[21 Vertical conveyor for boxes](#)

[23 Buffer sequencer](#)

## **24 PALLET CONVEYOR TECHNOLOGY**

[25 Pallet gravity](#)

[27 Pallet roller conveyor](#)

[29 Chain conveyor for pallets](#)

[30 Load/Unload module](#)

[33 Vertical pallet conve](#)

[37 Pallet lift](#)

[40 UnitHub](#)

[43 A-Frame](#)

[44 Control and Packing tables](#)

[46 Shuttle system – GNOM](#)

[49 Box shuttle](#)

[50 AKL](#)

[58 Conveyor sorter](#)

[59 Cross-belt sorter](#)

[60 Pick to Light & Put to Light](#)

[61 AGV](#)

[62 Platforms](#)

## **65 SOFTWARE**

[68 Pharma case study](#)

## **73 SERVICE & MAINTENANCE**

## **75 KAPELOU CONTACTS**



# ABOUT KAPELOU

## Stability

As a financially independent business, KAPELOU strives for long-term partnerships. You can be sure that our team of experts will be there today, tomorrow and in the future.

## Efficiency

KAPELOU solutions are scalable and able to grow along with your business. You can always carry out modernization or retrofitting.

## Quality

As an original equipment manufacturer and system integrator, KAPELOU offers individual and high-quality solutions from a single source, specially designed to solve your tasks.

## Reliability

With timely service and customer support, KAPELOU ensures the smooth operation of your system both during and after installation.

## Know-how

KAPELOU solutions always meet the latest technological standards and can be easily integrated into the existing (IT) system.



Production  
21,000 m<sup>2</sup>



200 + employees



600+ completed projects



36 Mio € turnover in sales



## KAPELOU

Manufacturer of  
conveyor systems  
and supplier of  
intralogistics  
solutions

Our location



Bergisch Gladbach



**PLATFORMS & MEZZANINES**  
**> 480,500 m<sup>2</sup>**



**CONVEYOR SYSTEMS**  
**> 123,000 m**



**ROBOTS & ELEVATORS**  
**> 215**



**PICK-BY-LIGHT**  
**> 168,000 buttons**

KAPELOU was **founded in 2013** for the assembly of racking systems

**In 2017**, KAPELOU diversified the services by offering the integration of automation systems in intralogistics

**In 2018**, KAPELOU production was launched

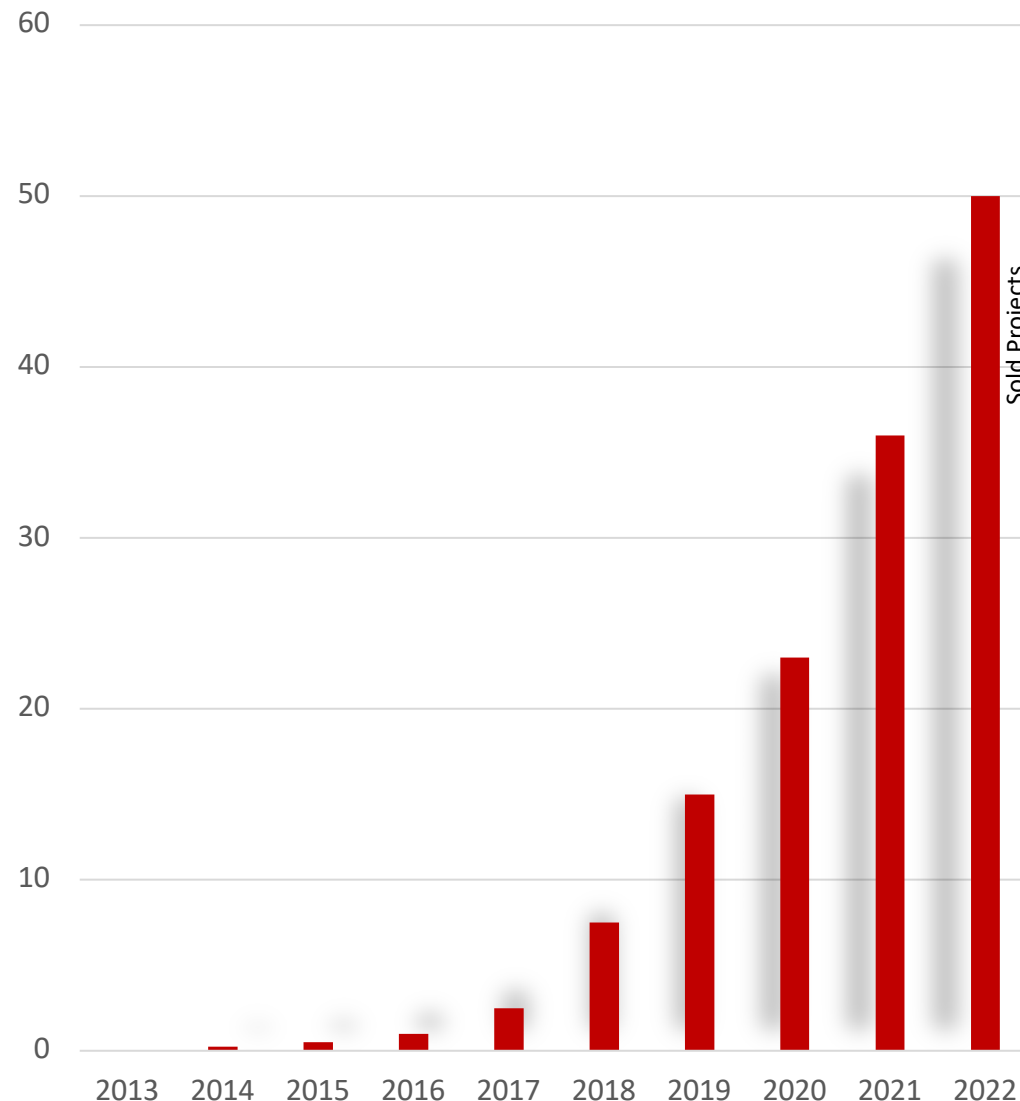
**600+** projects have been implemented

KAPELOU employes **>200 people**

**In 2022**, KAPELOU Sold Projects Volume was €50 million

**In 2023**, KAPELOU plans to achieve €70 million

*Kapelou is part of Ukraine's critical Infrastructure*





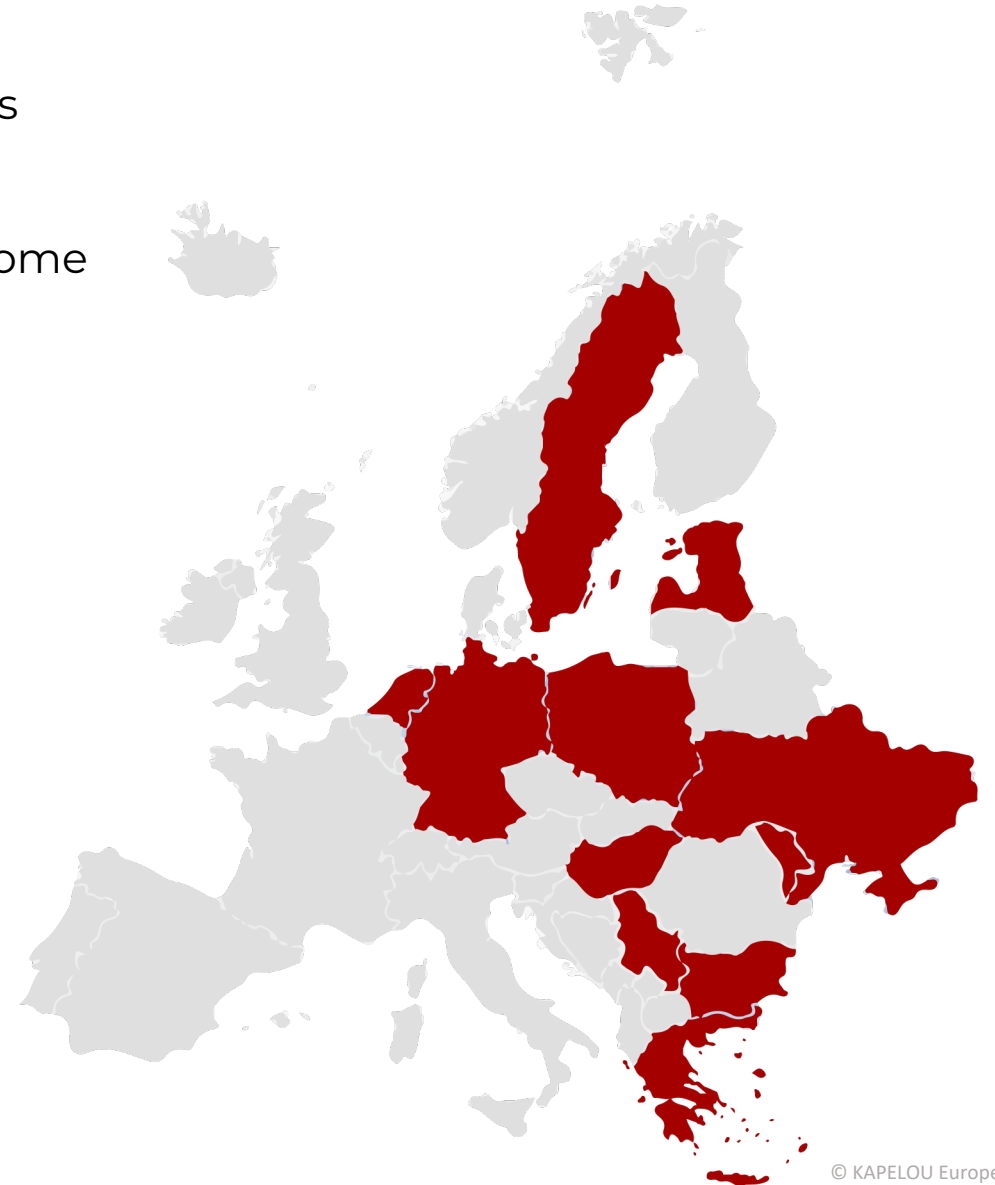
**KAPELOU** has already implemented over **600 projects** since its foundation.

The majority of these projects were realized in the KAPELOU home market Ukraine.

By strategic orientation of KAPELOU the project map is extended more to the west, to Central Europe.

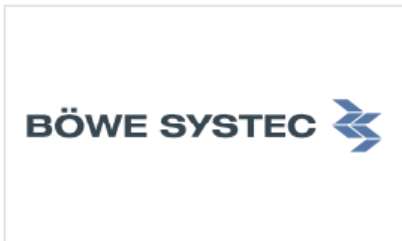
Projects implemented in these countries, among others:

- Bulgaria
  - Germany
  - Greece
  - Holland
  - Poland
  - Sweden
  - Ukraine
  - Hungary
  - Serbia
- .... and others

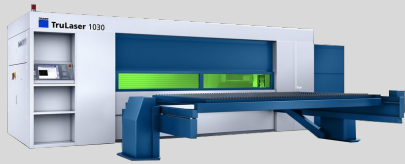




KAPELOU - certified partner META, SICK, SIEMENS



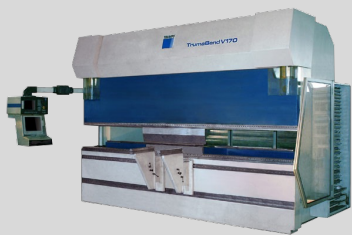




Laser Trumpf



Milling DMG MORI



Bending Trumpf



KATUZHANKA FACTORY - 16 000 M2



Punch Trumpf

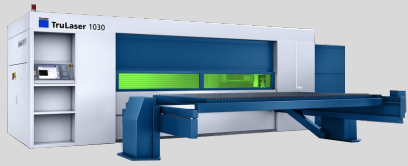


Lathe DMG MORI



Swaging

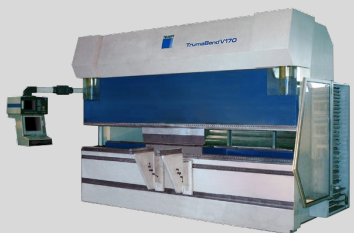




Laser Trumpf



Milling dmg mori



Bending Trumpf



Punch Trumpf



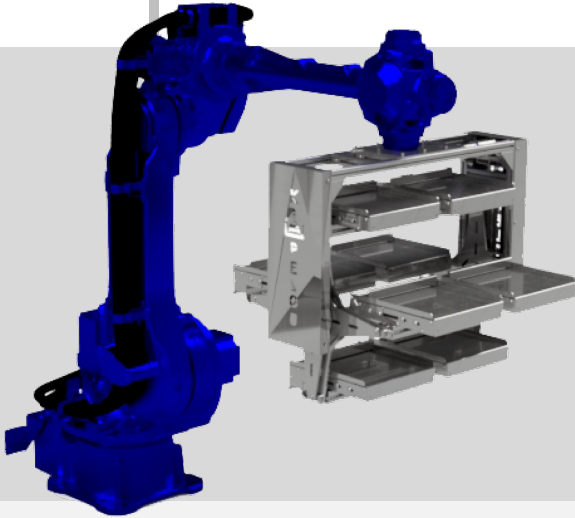
Lathe DMG MORI



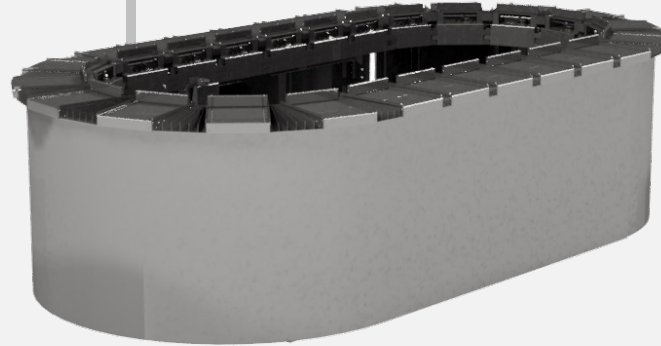
Swaging

# **KAPELOU R&D PRODUCTS & SYSTEMS**

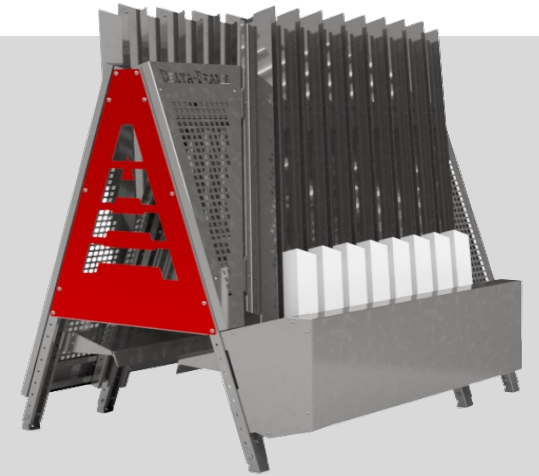
● RoboSort



● Sorting systems



● A-Frame



● Box Shuttle



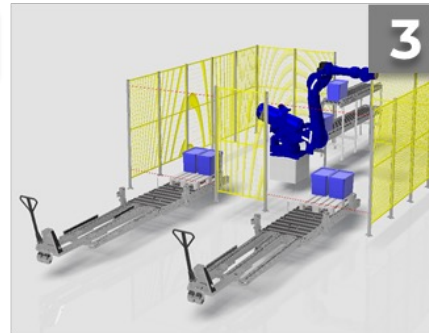
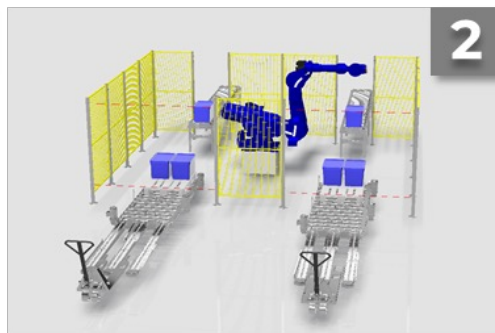
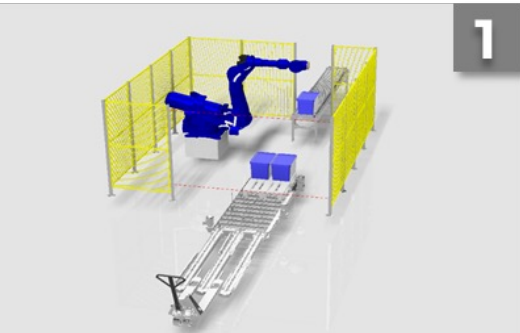
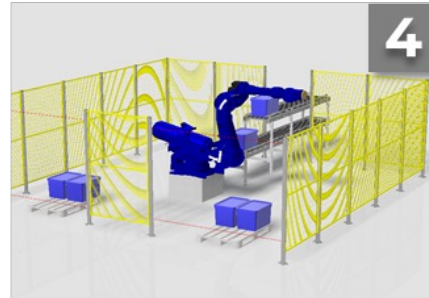
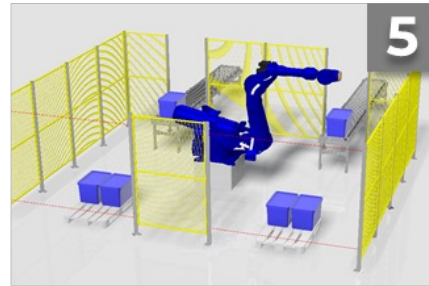
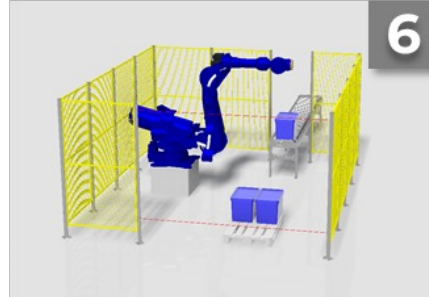
● Conveyor modules



● Automated storage and issuing of orders

# ROBOT APPLICATIONS





## LEAVE THE PHYSICAL WORK TO THE ROBOTS. INTELLIGENCE BELONGS TO PEOPLE.

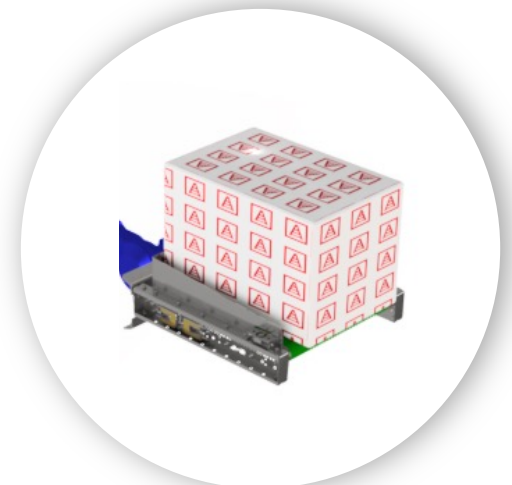
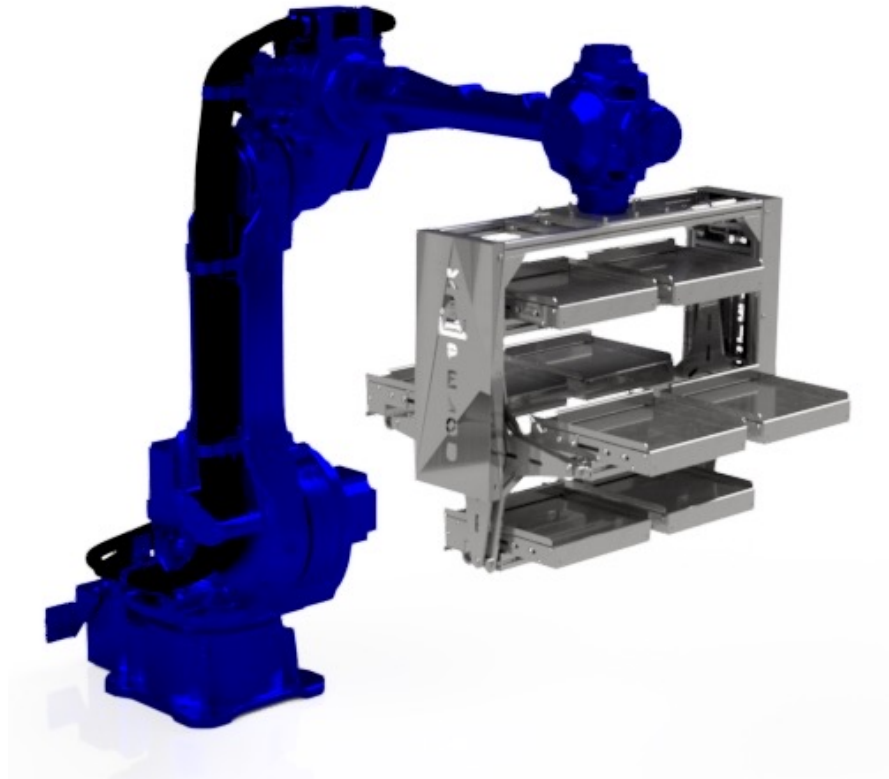
Solutions based on robotics allow you to work **24/7** without stops, breaks and sick days. Many times increase the accuracy of operations and the speed of work.

Robots perform physically demanding work and require a minimum of maintenance.

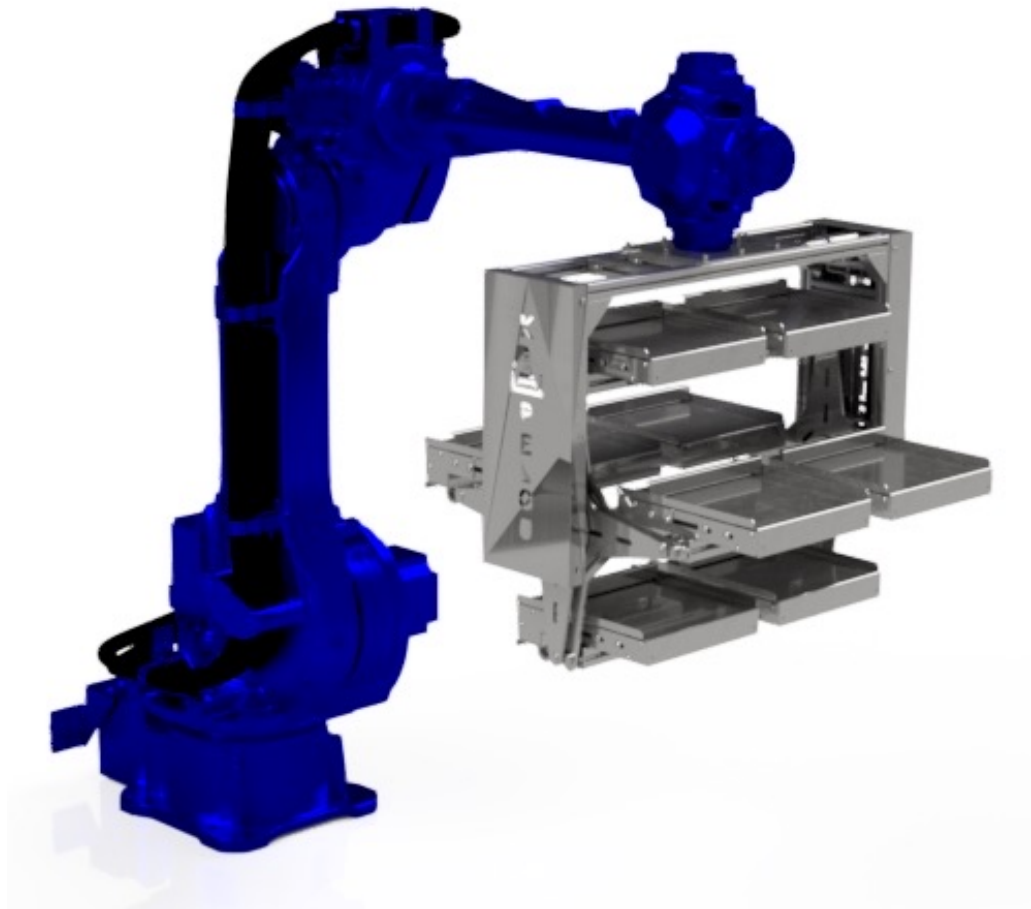
The payback of the project is **less than 12 months**. Calculated on the basis of the current project.

### Solutions

1	600 cycles per hour
2	800 cycles per hour
3	800 cycles per hour
4	600 cycles per hour
5	700 cycles per hour
6	700 cycles per hour







## PRODUCTIVITY x8

A feature of the four-tier automatic sorting system is that the carriages move along a curve, around their axis, which increases the reception/issuance of goods in a short period of time.

## Performance indicators

Productivity	3,600 pcs per hour
Rotation speed	30 rpm
Filling time	8 s
The overall size of the carriage	330 x 330 mm
Number of carriages	8 pcs
Power	0,45 kW

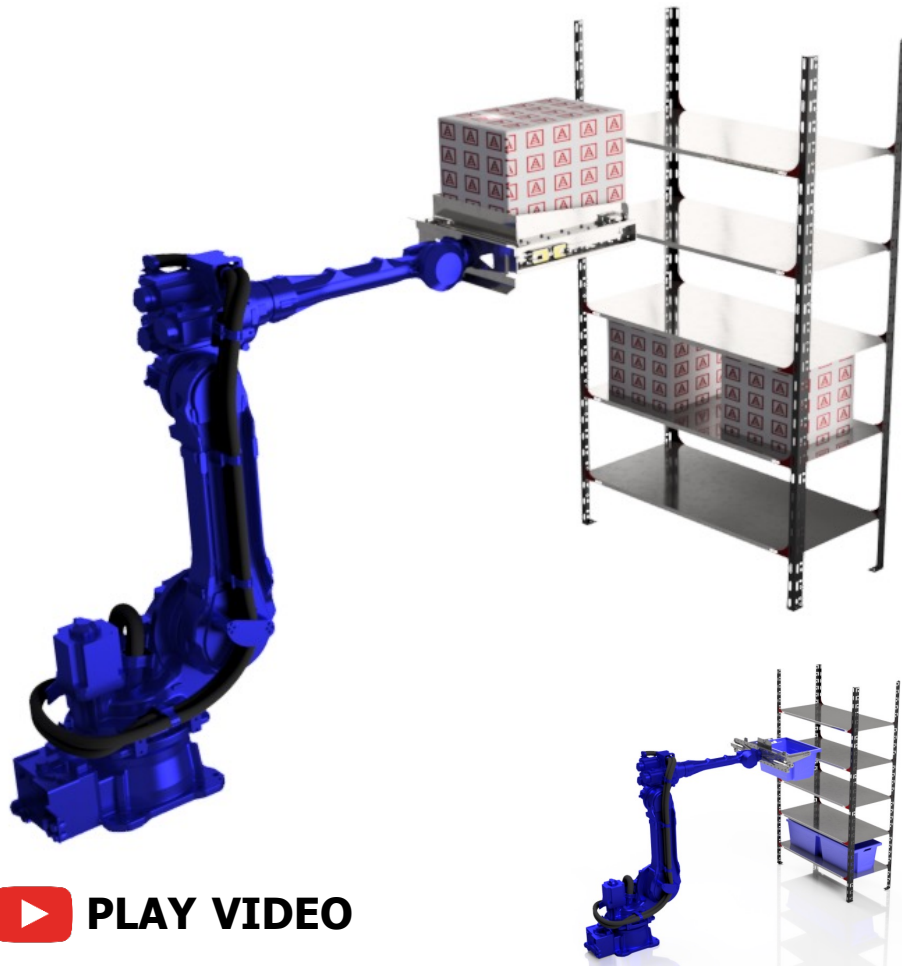
## Speedbot – equipment for quickly moving goods to storage locations

Speedbot efficiently performs the process of sorting parcels according to customer orders or shipping directions.

Works with any type of packaging, accurately and quickly places parcels from the conveyor in the required cells. Easily integrates with the warehouse management system, consumes electricity economically.

### Performance indicators

Productivity	up to 1 000 pcs per hour
Weight of the box	up to 30 kg
Dimensions of the box	400 x 400x 600 mm
The overall size of the carriage	330 x 330 mm
Product type	soft packaging, tablar, plastic and cardboard boxes
Power	0,45 kW

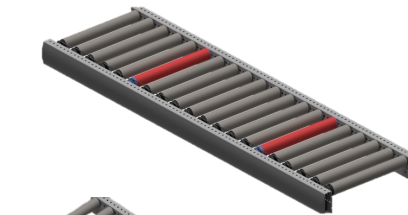
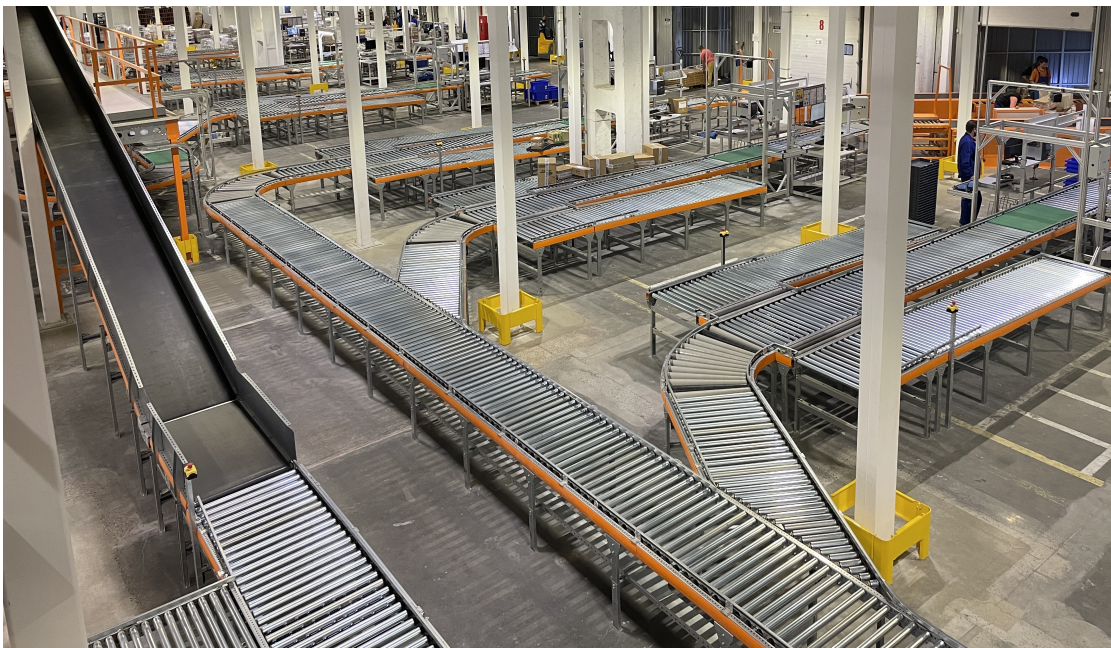




# **CONVEYOR TECHNOLOGY**

## **- BOXES & TOTES -**

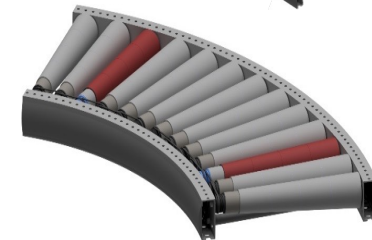
# CONVEYOR MODULES FOR BOXES



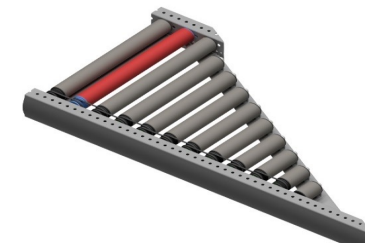
**Straight section**



← **Non-driven / Inclined sections**



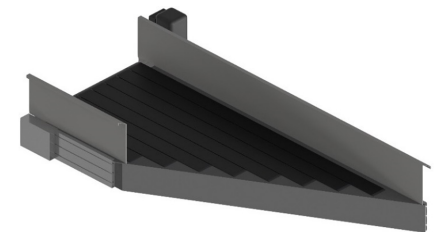
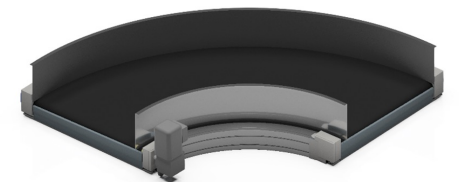
**Turning section**  
30° / 45° / 90°



**Infeed section**  
30° / 45° / 60° / 90°



**Folding section**



 **PLAY VIDEO**



300x  
300x  
50 MM

600x  
400x  
400 MM

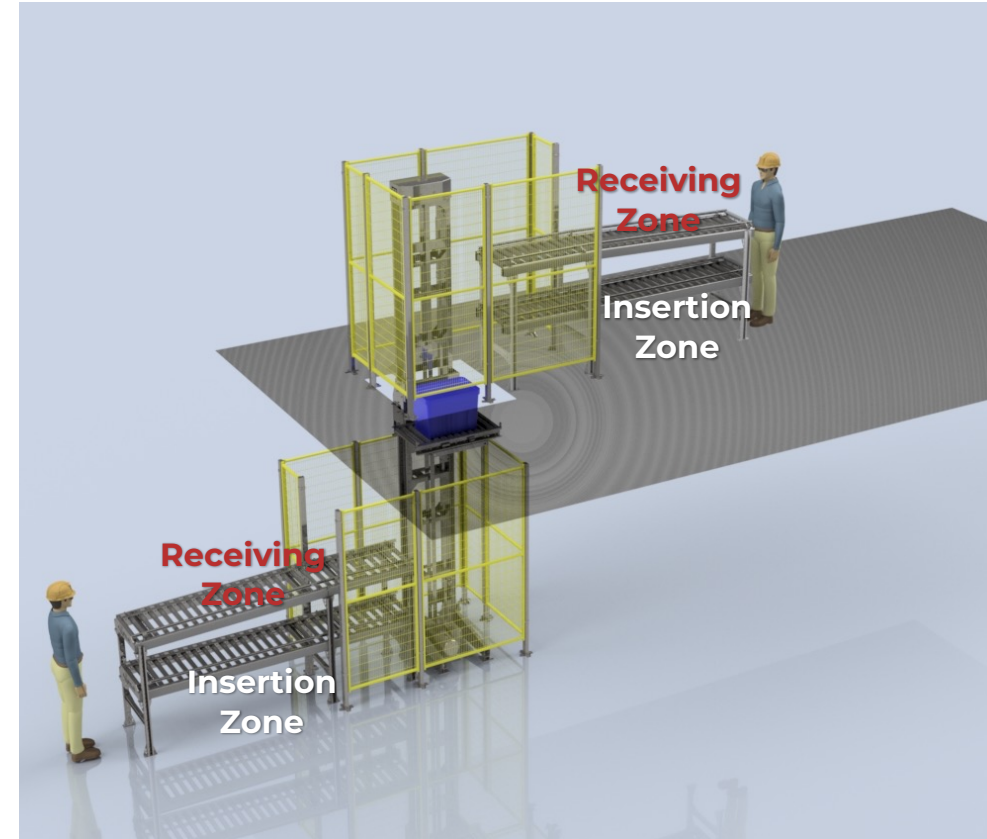
800x  
600x  
600 MM

**The weight of transported products - 35 kg**

**The speed of transportation - up to 1 m/sc**

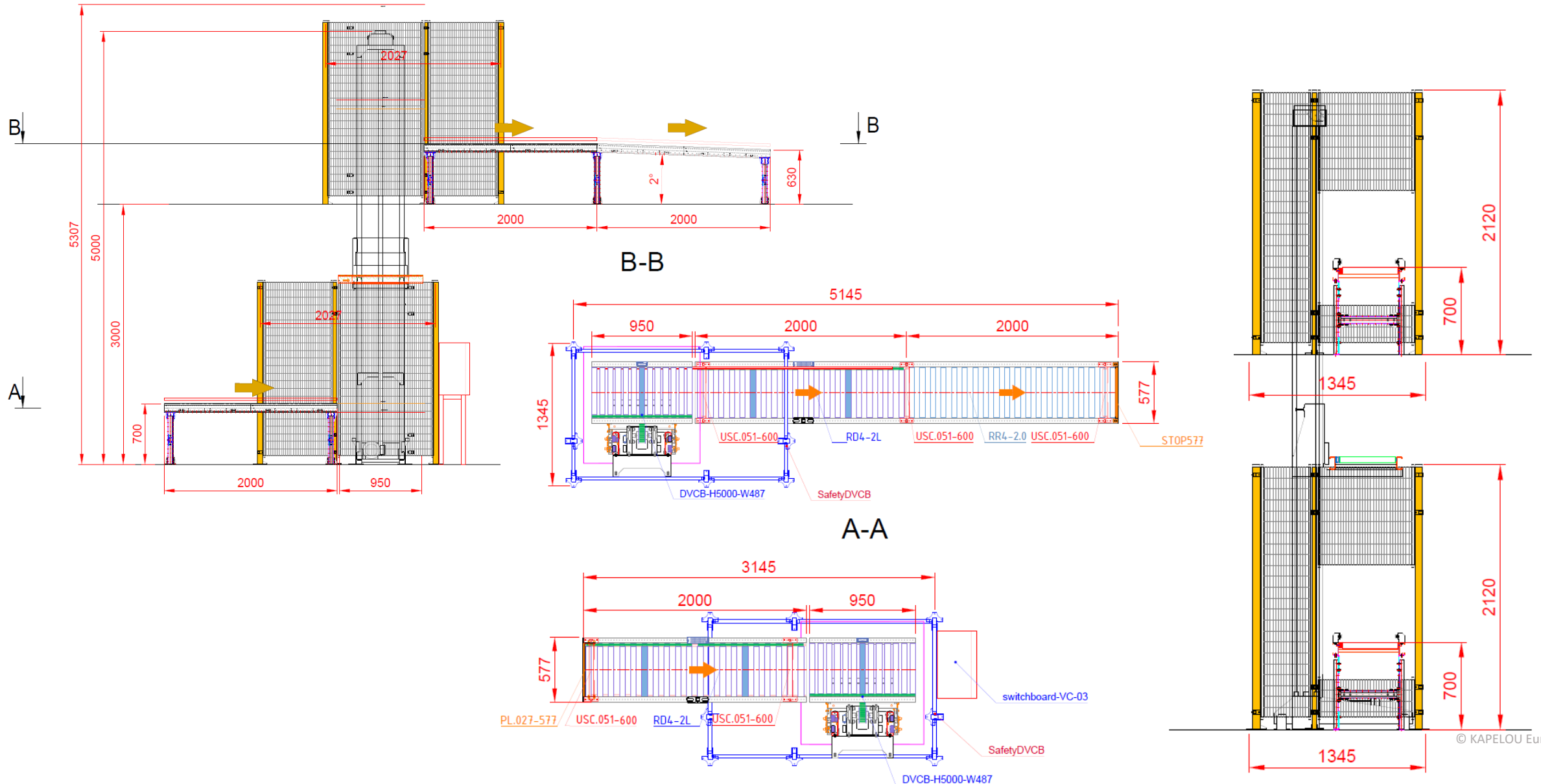
## Performance indicators

Direction	Up & Down
Transportation	Totes
Capacity	600 cycles
General Height	4.000 mm
Height between Floors	2.500 mm
Receiving Zones	2 m Non-driven Roller Conveyor + 1m Driven Conveyor
Insertion Zone	3 m Driven Roller Conveyor
Guardance	Fence included



 **PLAY VIDEO**

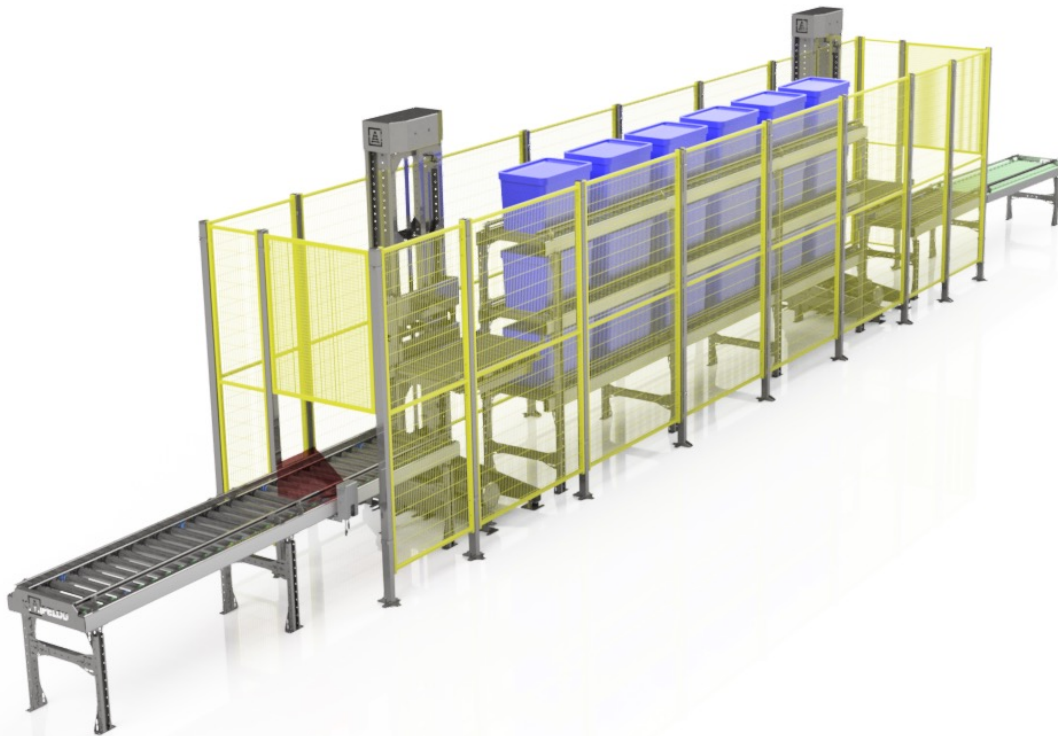
# VERTICAL CONVEYOR FOR BOXES





## PRELIMINARY PREPARATION AND SORTING OF THE WAVE

The system solves the problem of peak load of highly dynamic e-commerce warehouses, FMCG, manufactures, distributors.



 **PLAY VIDEO**

## HIGH PRODUCTIVITY AND ACCURACY

The uniqueness of the order storage system ensures a fully automated process of supplying trays with goods for order picking and eliminates errors in the picking process.

**24/7**

Works without vacations and lunches, overtime

**600 trays/hour**

Maximum productivity at 4 tiers

**2-16 tiers**

The number of tiers for forming order waves

**1 time a year**

Minimal maintenance

**Goods to Person (G2P)**

Waves of orders are sequentially delivered to the sorting workplace



# CONVEYOR TECHNOLOGY - PALLETS -

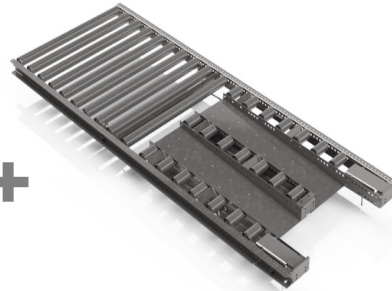
## MODULAR SYSTEM STRUCTURE:



Loading section



Intermediate section



Unloading section for  
pallet jack



**1 500 kg**

Maximum pallet weight

**80 %**

The ratio of utilization of the volume  
of the warehouse

**More than 10 years**

Term of service

**15 pallets**

Channel depth

**FIFO**

Principle of product picking

**1 time a year**

Min. maintenance

Each floor of the system can be assigned to a different  
product SKU or turnover

The modules are available for both tilt and non-tilt  
forklifts.



800x  
1200 MM

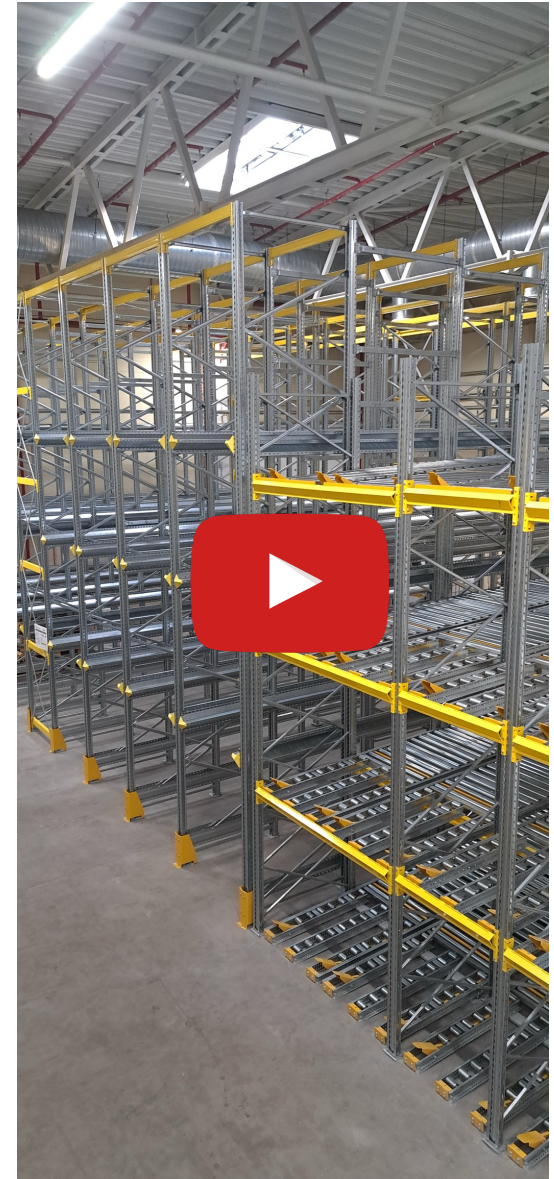
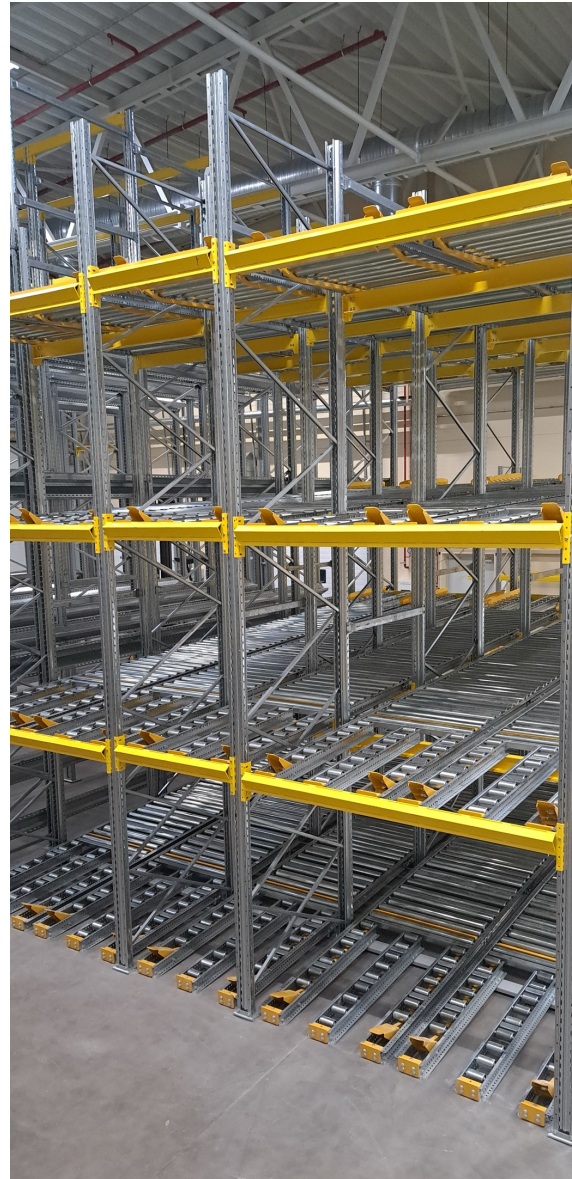
1000x  
1200 MM

1200x  
1200 MM



**Mondelēz**  
International

**MacCoffee**







## INCREASED EFFICIENCY AND SECURITY:

- The Kapelou modular pallet conveyor is a reliable and durable system designed for the horizontal transport of various types of pallets, including euro pallets, industrial pallets and half pallets.
- The conveyor consists of a strong frame and galvanized rollers  $\varnothing 76$  mm, which are easy to maintain. The rollers are driven by a single drive roller, and the drive is closed for safety. The guides are installed separately on rollers, which ensures smooth and accurate transportation of pallets. This system is ideal for businesses looking for a quality and efficient pallet handling solution.

## Options:

- Model for cold storage (-30C)
- Visualization system (HMI / SCADA)
- End stop
- Application of ZPA

 **PLAY VIDEO**

## Performance indicators

Transport speed, max.	0,3 m/s
Acceleration	0,3 m/s
Load capacity, max.	1.500 kg
Productivity	Up to 300 units / hour

## Basic data

Width (W)	1.050 / 1.250 / 1.450 mm
Length (L)	1.000 – 10.000 mm
Pitch of rollers (P)	175 mm
Transportation height (TH)	Min. 160 mm
Engine Power	0,18 / 0,25 / 0,37 / 0,55 kW



## INCREASED EFFICIENCY AND SECURITY:

- The modular pallet conveyor from Kapelou is a strong and reliable system designed for the horizontal transport of various types of pallets, including euro pallets, industrial pallets and half pallets.
- The galvanized conveyor consists of a stable frame and Ø89 mm rollers that are easy to maintain. The rollers are set in motion with the help of a motor-reducer, which ensures efficient and smooth transportation of pallets. This system can operate in the mode of a pass-through conveyor or in the mode of an accumulation conveyor, when only those areas that transport pallets are active at any time. This feature increases performance and reduces power consumption.

## Options:

- Model for cold storage (-30C)
- Visualization system (HMI / SCADA)
- End stop
- Application of ZPA

## Performance indicators

Transport speed, max.	0,3 m/s
Acceleration	0,3 m/s
Load capacity, max.	1.500 kg
Productivity	Up to 900 units / hour

## Basic data

Width (W)	1.050 / 1.250 / 1.450 mm
Length (L)	1.000 – 10.000 mm
Pitch of rollers (P)	200 mm
Transportation height (TH)	Min. 160 mm
Engine Power	0,18 / 0,25 / 0,37 / 0,55 kW



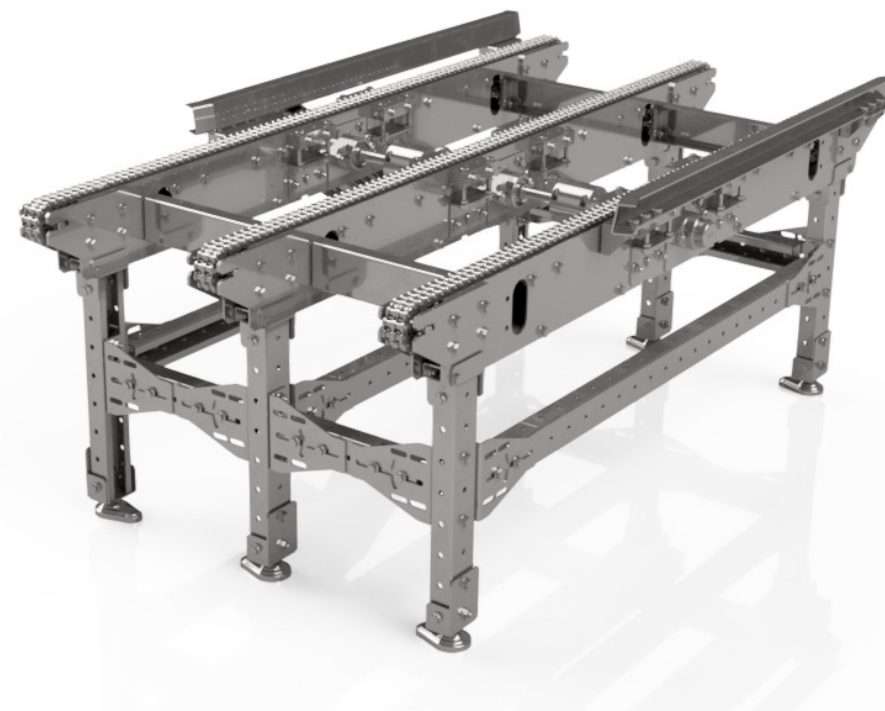
The drive direct chain conveyor is designed for automatic transport of pallets on the wide side. It consists of 2 integrated parallel chains connected by a motor-reducer.

## Lifting devices:

- Roller conveyor
- Chain conveyor
- Lifting table
- Turntable

## Options:

- Model for cold storage (-30C)
- Visualization system (HMI / SCADA)



## Performance indicators

Productivity	60 units/hour
Transportation speed, max.	0,3 m/s
Load capacity, max.	1.500 kg
Engine power	0,18 – 0,55 kW

## Basic data

Width	760 mm
Length	1.475 mm
Height	145 mm
Transportation height	Min. 400 mm



This module is used to load or unload the conveyor with pallets. For example, pallets can be placed on a conveyor or removed from it using a forklift.

It is appropriate to use the module in such cases :

1. If pallets are unloaded from trucks in the shipping area of the warehouse and need to be placed on a conveyor
2. When pallets need to be quickly removed in the final part of the conveyor system of the system for further loading.



## Performance indicators

Transport speed, max.	0,3 m/s
Load capacity, max.	1.500 kg
Angle of inclination	2°
Engine power	0,18 – 0,55 kW



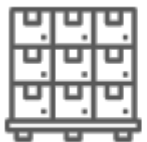
**800x**  
1200 MM

**1000x**  
1200 MM

**1200x**  
1200 MM



# LOAD/UNLOAD MODULE



**800x**  
1200 MM

**1000x**  
1200 MM

**1200x**  
1200 MM



# LOAD/UNLOAD MODULE

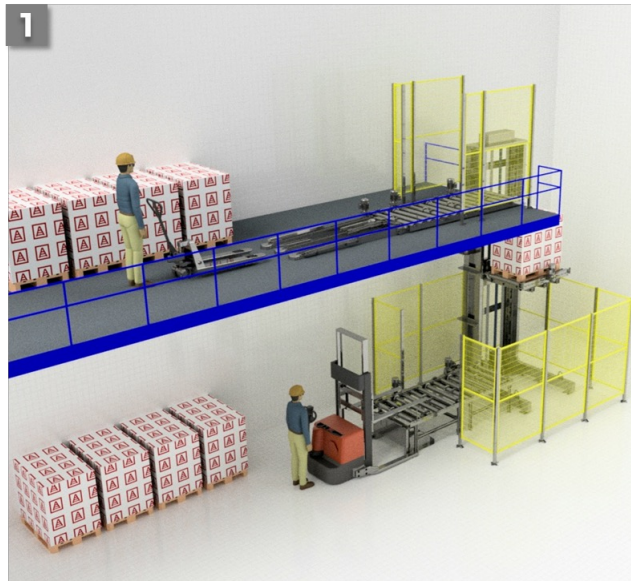


## Basic data

Width (W)	1.500 mm
Length (L)	2.400 mm
Column height (H)	Up to 15 m
Transportation height (TH)	Min. 400 mm
Base area	3 m <sup>2</sup>

## Performance indicators

Productivity	60 units / hour
Carriage lifting speed, max.	0,3 m/s
Acceleration, max	0,3 m/s
Load capacity, max.	1.200 kg
Mode of transportation	1 pallet / cycle



**800x**  
1200 MM

**1000x**  
1200 MM

**1200x**  
1200 MM

## Options:

- Model for operation in the cold (-30C)
- Visualization system (HMI / SCADA)

## Lifting devices:

- Roller conveyor
- Chain conveyor
- Lifting table
- Turntable





# VERTICAL PALLET CONVEYOR





# VERTICAL PALLET CONVEYOR





# Vertical pallet Conveyor

by Kapelou



## Basic data

Width	1.500 mm
Length	2.400 mm
Column height	Up to 25 m
Transportation height	Min. 400 mm
Base area	3,45 m <sup>2</sup>

## Performance indicators

Productivity	100 units / hour
Carriage lifting speed, max.	0,3 m/s
Acceleration, max	0,3 m/s
Load capacity, max.	2.000 kg
Mode of transportation	1 pallet / cycle

## Advantages:

- Minimum occupied area
- Feed/unload from all sides
- Suitable for vertical sorting
- Quiet
- Strong steel construction
- Standard equipment with cable safety device

## Options:

- Model for operation in the cold (-30C)
- Visualization system (HMI / SCADA)

## Lifting devices:

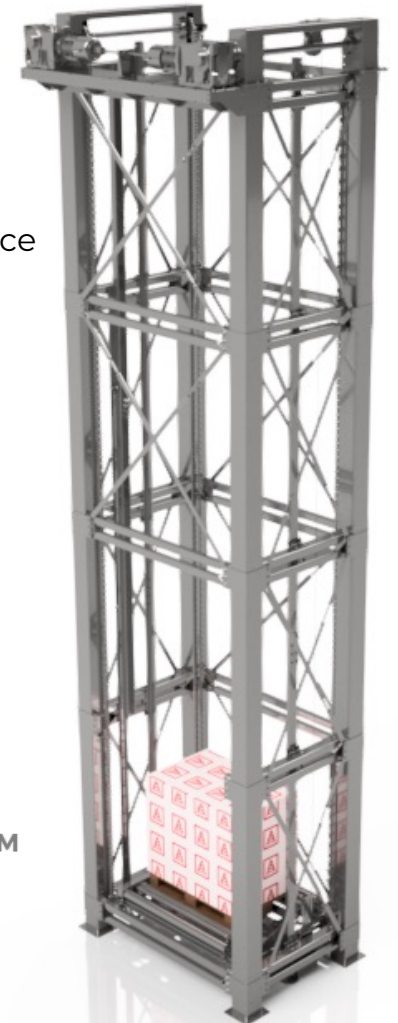
- Roller conveyor
- Chain conveyor
- Lifting table
- Turntable



**800x**  
1200 MM

**1000x**  
1200 MM

**1200x**  
1200 MM



**MPVC.008**



# PALLET LIFT





# SPECIAL APPLICATIONS

**UnitHub®** is a space-saving, automated storage system based on a 3D measuring system and dynamic shelving.



STORING products / orders



DISPENSING orders



SENDING parcels

## Application example of the Unithub:



A package is placed in the **Unithub** by a member of staff



The volume of the package is automatically measured in the **Unithub**



The parcel is stored in a corresponding, possibly dynamically adjusted, storage place



The customer receives a notification code on his smartphone for the collection of the parcel



The customer can initiate the collection with the help of the notification code and an app



Unithub delivers the corresponding package to the customer

 **PLAY VIDEO**



## Parameters

Storage capacity, max.	400 trays
Size of the storage place (WxL)	600x400 mm
Height of the storage place	Dynamic
Measurement of parcel size and weight	Automatically
Parcel weight, max.	30 kg
Location	Indoor / Outdoor
Possible climate control levels	2-8°C / 8-15°C / 15-25°C
Type of goods	Cartons, plastic trays, containers, bottles and more

## Main benefits of UnitHub

- 24/7 service
- Maximum storage capacity through dynamic storage locations
- Fully automated parcel delivery and acceptance
- Scalable system
- Can be used as a cold store
- State-of-the-art warehouse automation to increase customer satisfaction





# UNITHUB® 3-IN-1 SYSTEM





**A-Frame is a warehouse picking system**, that packs products from vertical channels into boxes, cartons or onto a conveyor belt that moves through the center of the system.

## Parameters

Size of product, min.	45x40x60 mm
Size of product, max.	160x85x190 mm
Picking speed, max.	3.000 products / hour
Output system speed, max.	5 products / second
Product weight in vertical channel, max.	15 kg

[!\[\]\(d66ff64371a51729ac8c1cdaa685ba6f\_img.jpg\) \*\*PLAY VIDEO – 3D\*\*](#)

[!\[\]\(e3f8612927870f2e0f9f5989e6dd3064\_img.jpg\) \*\*PLAY VIDEO\*\*](#)

24 channels, 12 on each side





## CONVENIENCE AND ERGONOMICS

It is intended for the convenient organization of the workplace of an employee who is engaged in picking, sorting, packing and controlling goods. Suitable for working with any goods.

Using the table simplifies the work - you no longer have to lift and carry a heavy product, it is enough to pull it from the conveyor to the auxiliary corner of the table, and then perform the assigned tasks.

## Features

- The table top is made of stainless steel and is therefore resistant to scratches, impacts and other mechanical damage
- The wooden pad protects the worker from contact with the cold metal surface
- Well-thought-out protection against cuts - pasted protective tape in places where you can harm yourself
- Modularity and versatility allow you to assemble a table according to the parameters (height) of a specific employee.

# **STACKER CRANES & SHUTTLE SYSTEMS**

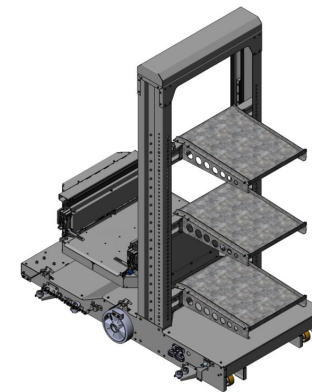


## G2P. Increases storage density by 80-400%

KAPELOU's latest development, an autonomous goods handling robot, which we call GNOM, is designed for automatic pick, storage and simultaneous processing of several boxes.

### Performance indicators

Movement speed	1 m/s
Carriage movement speed	0,25 m/s
Load	up to 30 kg
Product dimensions (W x H x D)	400x220 (up to 400) x600 mm
Storage range	0,4 – 1,5 m
Platform rotation angle	90°
Number of places for simultaneous movement of goods	3+1



RT.016.00.00.000.

Eliminates the need for extra runs of pickers, increasing the accuracy of picking and reducing labor intensity.

Compared to manual selection, automated solutions **increase efficiency by 2-3 times.**

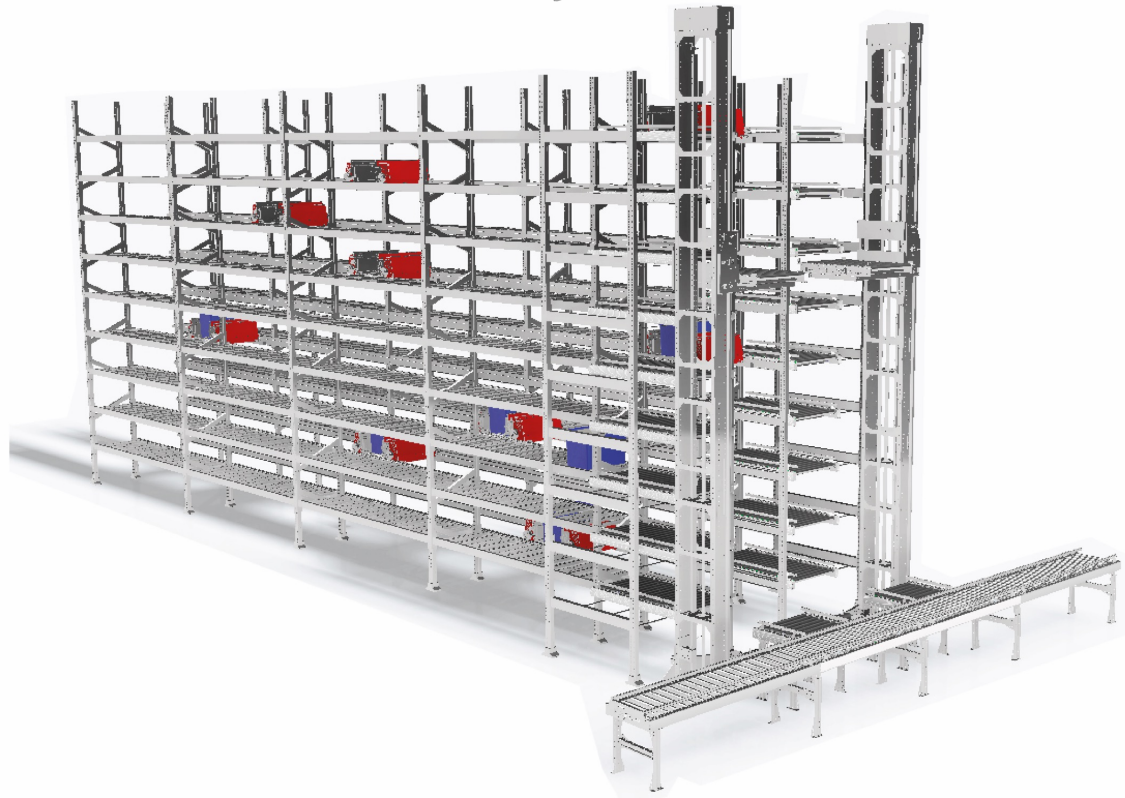


## Advantages of using AS/RS GNOM®:

- High system performance
- Maximum storage density
- No need for extra elevator or conveyor systems
- Works with all box types and sizes
- Each rack section independently shelf-filled
- Wave picking in a single pass
- Picking from a double-deep system
- It is possible to use more than 1 GNOM® system in each aisle

 **PLAY VIDEO**





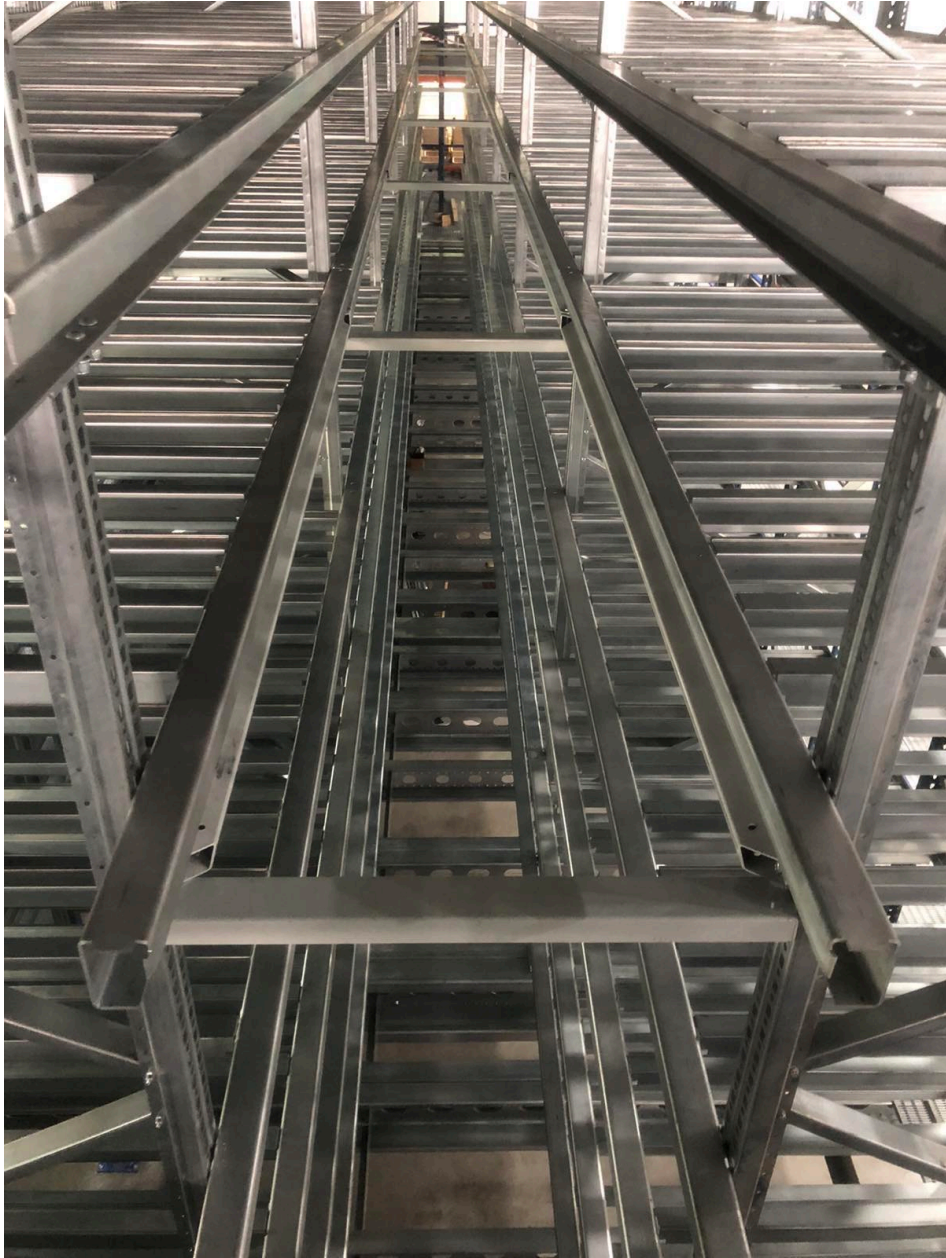
An automated system of placement and picking of goods, which allows you to store goods as densely as possible, quickly and accurately deliver them to warehouse operators.

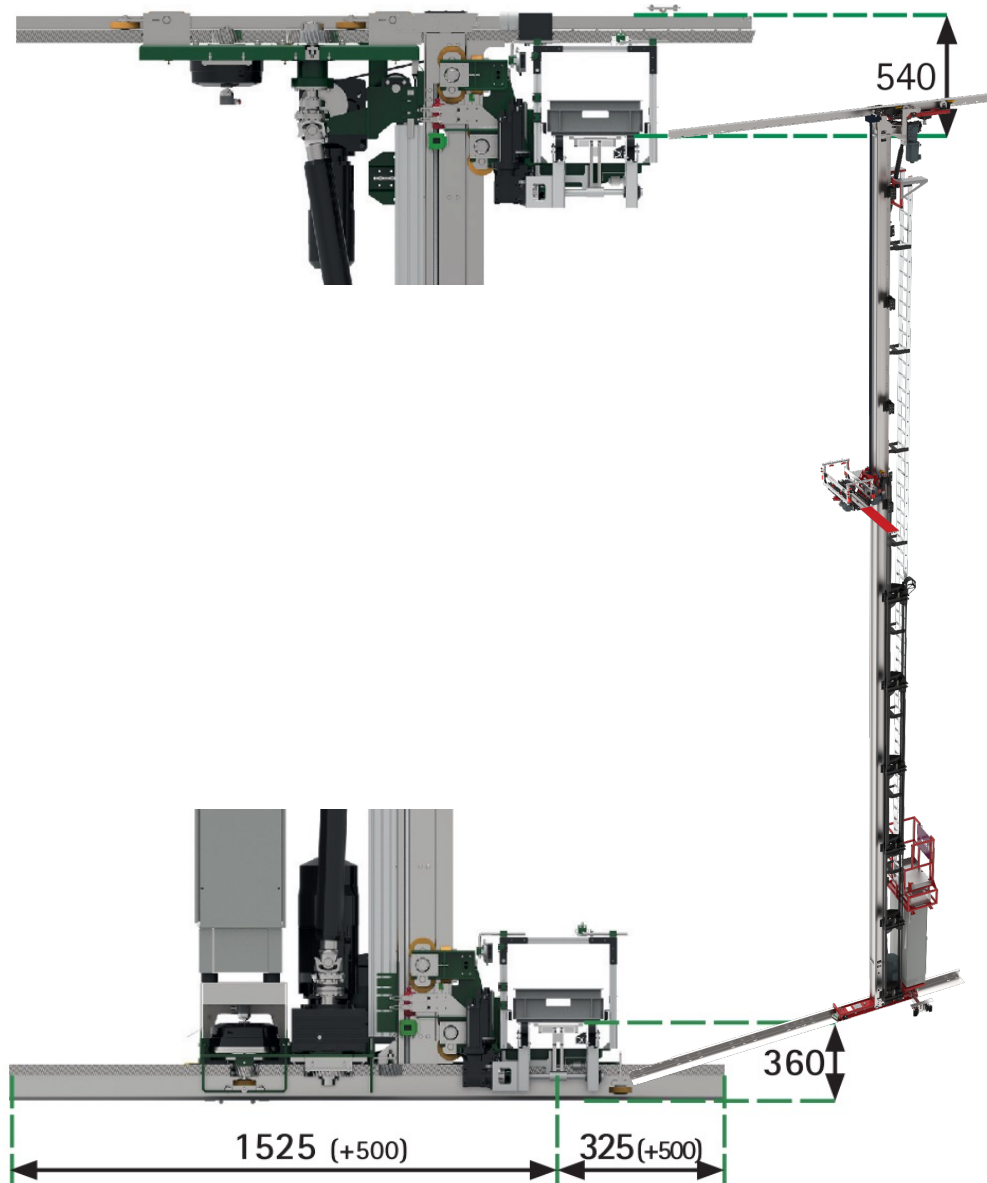
## Parameters

Speed, max.	2 m/s
Load, max.	30 kg
Product dimensions (L x W)	600 x 400 mm
Type of goods	boxes, trays
Length, max.	100 m
Height, max.	12 m
Storage type	one-row, two-row



# BOX SHUTTLE



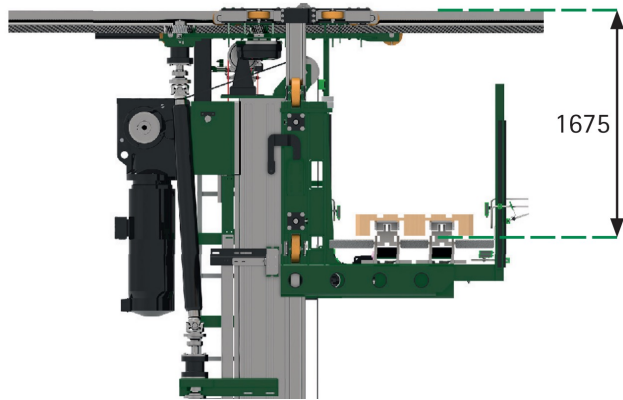


A compact tool for moving boxes, which significantly increases the speed of loading and unloading cargo in the warehouse, eliminates delays and improves work efficiency. Maximum precision.

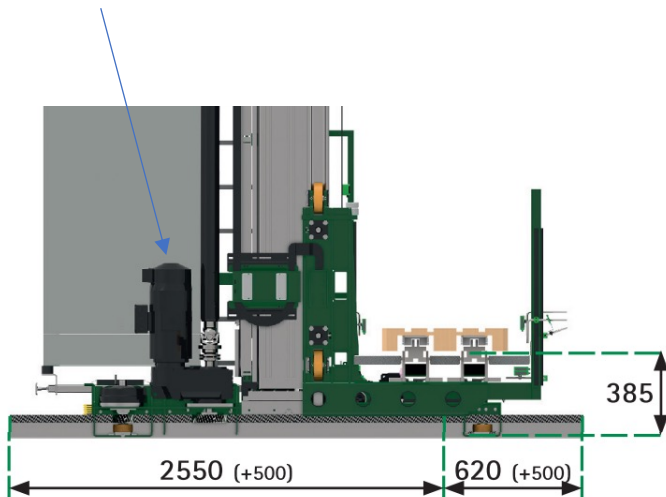
## Parameters

Box Sizes	All Box Sizes
Load capacity	2 x 50 kg
Lifting Height (max.)	25 m
Acceleration (max.)	5 m/s <sup>2</sup>
Velocity	6 m/s
Approach Dimension	325 mm
Bottom Distance	360 mm
Top Distance	540 mm
Maximum Precision	Rack & Pinion Drives





The **motor** drives the stacker crane at the top and bottom equally via the shaft with cardan joint. Maximum precision is achieved by the rack and pinion drive.



A compact tool for moving boxes, which significantly increases the speed of loading and unloading cargo in the warehouse, eliminates delays and improves work efficiency. Maximum precision.

## Parameters

Carrier	Pallets / Cages / etc.
Load capacity	1.500 kg
Lifting Height (max.)	40 m
Acceleration (max.)	1,5 m/s <sup>2</sup>
Velocity	6 m/s
Approach Dimension	620 mm / 2.550mm
Bottom Distance	385 mm
Top Distance	1.675 mm
Maximum Precision	Rack & Pinion Drives





Stacker crane without top rail. Fits perfect in yet existing warehouses which shall be automated afterwards.

Also good for flat Building and infeed of double layer flow Racks.

## Parameters

Carrier	Pallets / Cages / etc.
Load capacity	1.500 kg
Lifting Height (max.)	10 m
Acceleration (max.)	1 m/s <sup>2</sup>
Velocity	2 m/s
Approach Dimension	1.510 mm / 2.780 mm
Bottom Distance	500 mm
Top Distance	700 mm
Lane Width:	1.400 mm – 1.600 mm

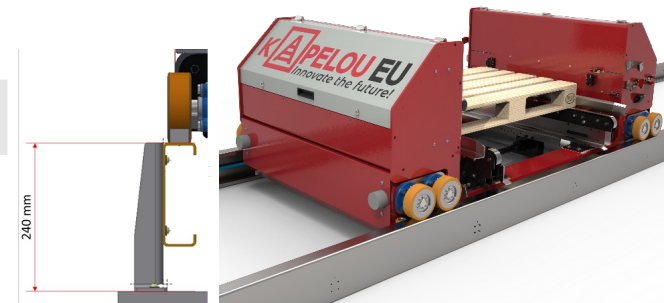
## Parameters

Carrier	Pallets / Cages / etc.
Load capacity	2.500 kg
Acceleration (max.)	0,5 m/s <sup>2</sup>
Velocity	Up 4 m/s
Loading Equipment	All Conveyor Types (e.g. Chain)
Power Supply	Drag Chain or Conductor Rail
Max Length with Drag Chain	50 m
Rail height	240 mm
Engery Aisle Shuttle	Akkumulator

A Shuttle System can be a cost effective alternative to classical conveyor technology. Wherever classical conveyor limits the multidirectional operation a shuttle can be integrated

A compact tool for moving boxes, which significantly increases the speed of loading and unloading cargo in the warehouse.

The “inload” Aisle Shuttle can be integrated an position the Pallets safely in a Racking System to increase storage density.



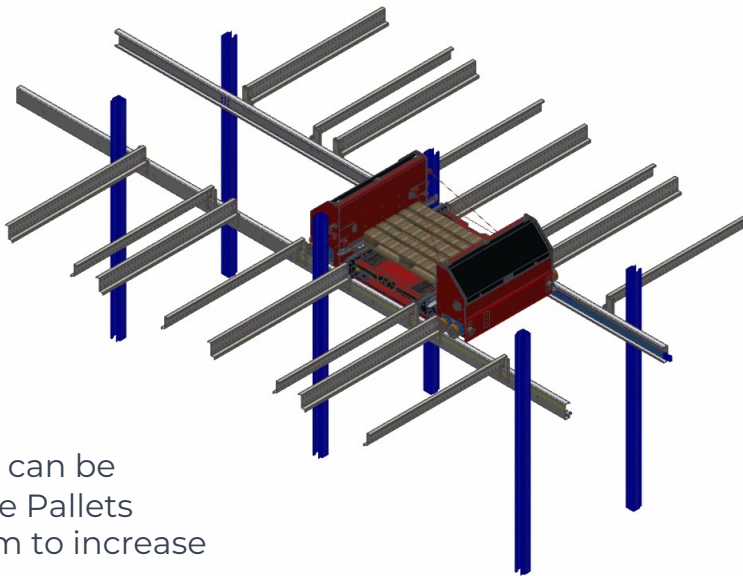
Can carry Aisle Shuttle below the Load



Aisle Shuttle with Excentric Stroke for Shuttle Racking Systems

A Shuttle System can be a cost effective alternative to classical conveyor technology. Wherever classical conveyor limits the multidirectional operation a shuttle can be integrated

A compact tool for moving boxes, which significantly increases the speed of loading and unloading cargo in the warehouse.



The “inload” Aisle Shuttle can be integrated in position the Pallets safely in a Racking System to increase storage density.

## Parameters

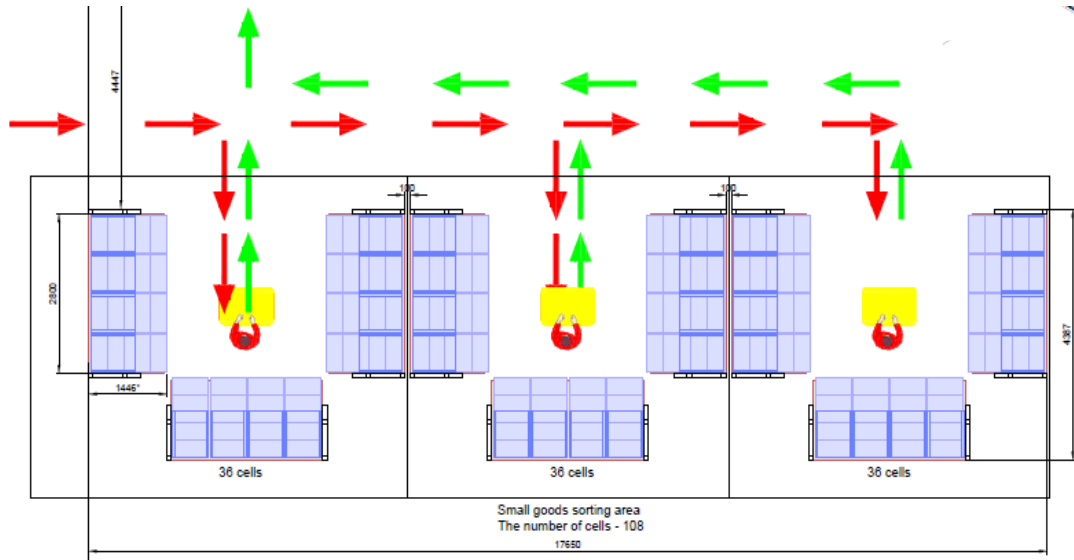
Carrier	Pallets / Cages / etc.
Load capacity	2.500 kg
Acceleration (max.)	0,5 m/s <sup>2</sup>
Velocity	Up 4 m/s
Loading Equipment	All Conveyor Types (e.g. Chain)
Power Supply	Drag Chain or Conductor Rail
Max Length with Drag Chain	50 m
Rail height	240 mm
Engery Aisle Shuttle	Akkumulator





# **SORTING SYSTEMS**





**PBL Systems** are fast Sorting Options and support the manual process. They help reducing errors. Recommended for goods up to 2kg.

## Process

- Scan the barcode
- Light appears at the spot where to place the good
- Put good into the right place
- Repeat process with next good

## Parameters

Sorting system	Pick by Light / Put to Light
Capacity	Fast (depending on manual speed)
Main benefit	Reducing of failures in manual picking
Handheld scanner	Identification of barcode
Light system	Light flashing to identify storage area
Racking	Flowrack system



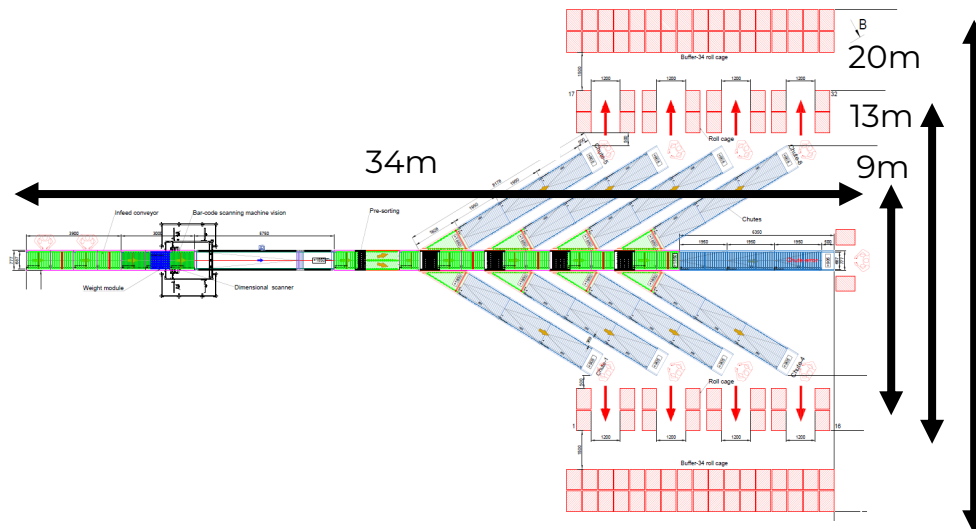


## Features

- Conveyor Sorters are robust and cost efficient. The capacity is limited by hall space depending on infeed & outfeed.
- Dimensions 300x200x5 to 800x600xs, shape must be cubic.

## Process

- Parcels put on Infeed
- Premodules scan weight & volume
- Barcode Scanner scans the Parcel
- Diverter System pushes good to right outfeed



## Parameters

Capacity	2.000 parcels / hour
Destinations	32
Infeed Conveyor	Separating Parcels
Volume Scanner	For Transportation Optimization
Weighing Module	For Verification
PreSorting	Start of System
Lifting Belt	Lifts Goods, so that they can easy be diverted out
Outfeeds	8 – Goods are pushed to here for 4 Destinations
Sorting Cages	32 – 4 Cages at each area

## Parameters

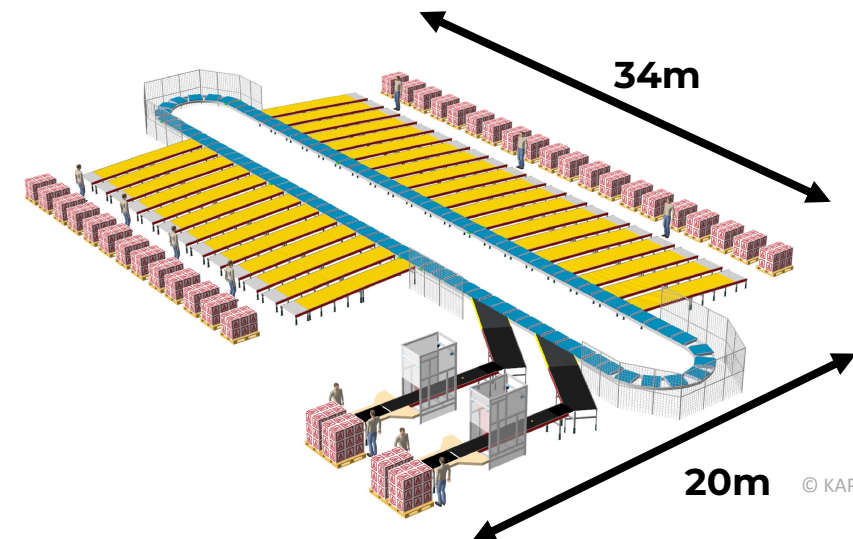
Capacity	> 8.000 parcels / hour
Destinations	33
Infeed Conveyor	Seperating Parcels
Volume Scanner	For Transportation Optimization
Weighing Module	For Verification
PreSorting	Start of System
Lifting Belt	Lifts Goods, so that they can easy be diverted out
Outfeeds	8 – Goods are pushed to here for 4 Destinations
Sorting Cages	32 – 4 Cages at each area

## Features

- Ideal for high capacities. If ROI permits, it represents the most advantageous system for installation
- Capable of sorting sizes ranging from 50x50x5 mm to 900x700x500 mm
- Versatile enough to handle products of irregular shapes

## Process

- Parcels will be infeed into sorting cycle
- The sorting belt runs at a constant speed
- Parcels get pushed out to the right outfeed



# PICK TO LIGHT & PUT TO LIGHT SYSTEM

- Video of a client's System for Pharma Solutions
- A put-to-light system, but not a classical one



 [PLAY VIDEO](#)





## GOOD TO PERSON (G2P)

A modern method of moving goods in the warehouse, which speeds up the process of placing and picking goods.

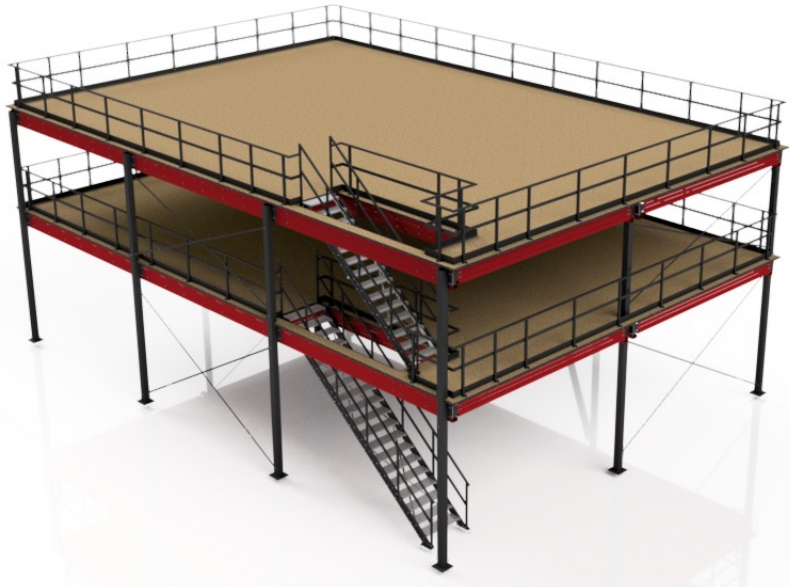
## Parameters

Dimension of robot (LxWxH)	480x380x200 mm
Box weight, max.	5 kg
Speed, max.	1,5 m/s

## Benefits

- x3 to sorting efficiency
- 99.99% accuracy
- 1-2 years ROI
- A flexible solution
- Run up to 8 weeks

# PLATFORMS



**▶ MEZZANINE ON THE PLATFORM**

**▶ PLATFORM 1 LEVEL**

**▶ PICK TOWER**

Maximum efficient use of warehouse space

- The possibility of organizing independent storage areas;
- Effective use of warehouse space;
- Relative ease of installation;
- The possibility of expanding the structure;
- Various modifications of the racking system;
- Ability to use different types of flooring.

## Technical characteristics

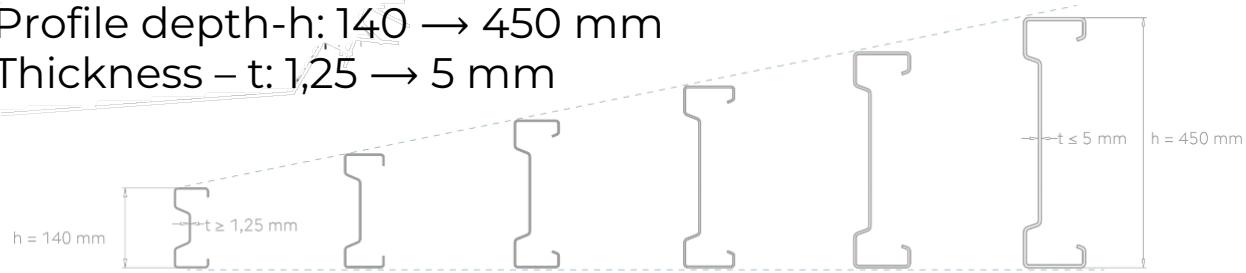
Available construction height, max	18 m
Load per m <sup>2</sup> , max.	100 – 1.500 kg
Number of levels, max.	5
Type of overlap	lattice flooring; fire-resistant and moisture-resistant chipboard; perforated flooring; non-perforated flooring
Element processing is available	enamel powder coating galvanized execution
Available construction height, max.	18 m



## SIGMA & SIGMA-PLUS PROFILES:

Profile depth-h: 140 → 450 mm

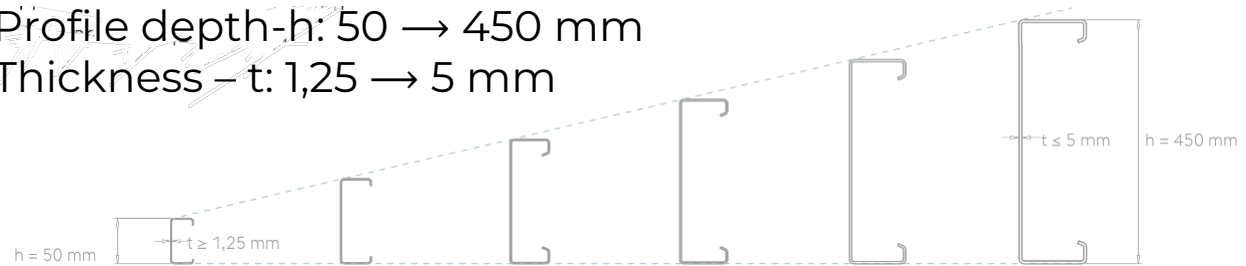
Thickness - t: 1,25 → 5 mm



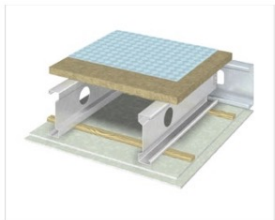
## CEE & CEE-PLUS PROFILES:

Profile depth-h: 50 → 450 mm

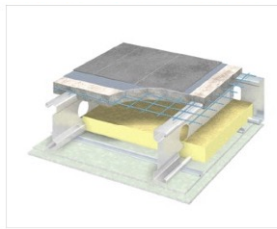
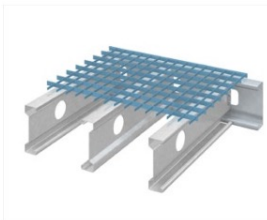
Thickness - t: 1,25 → 5 mm



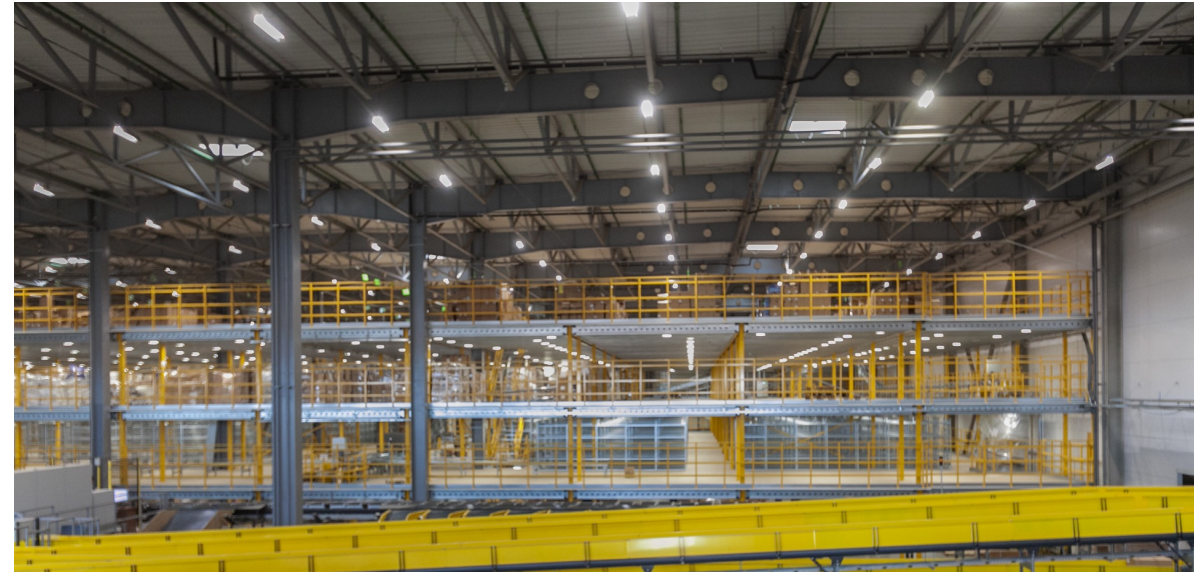
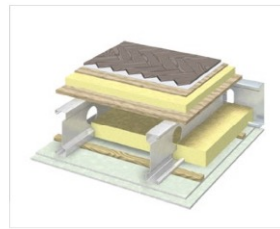
## Types of flooring



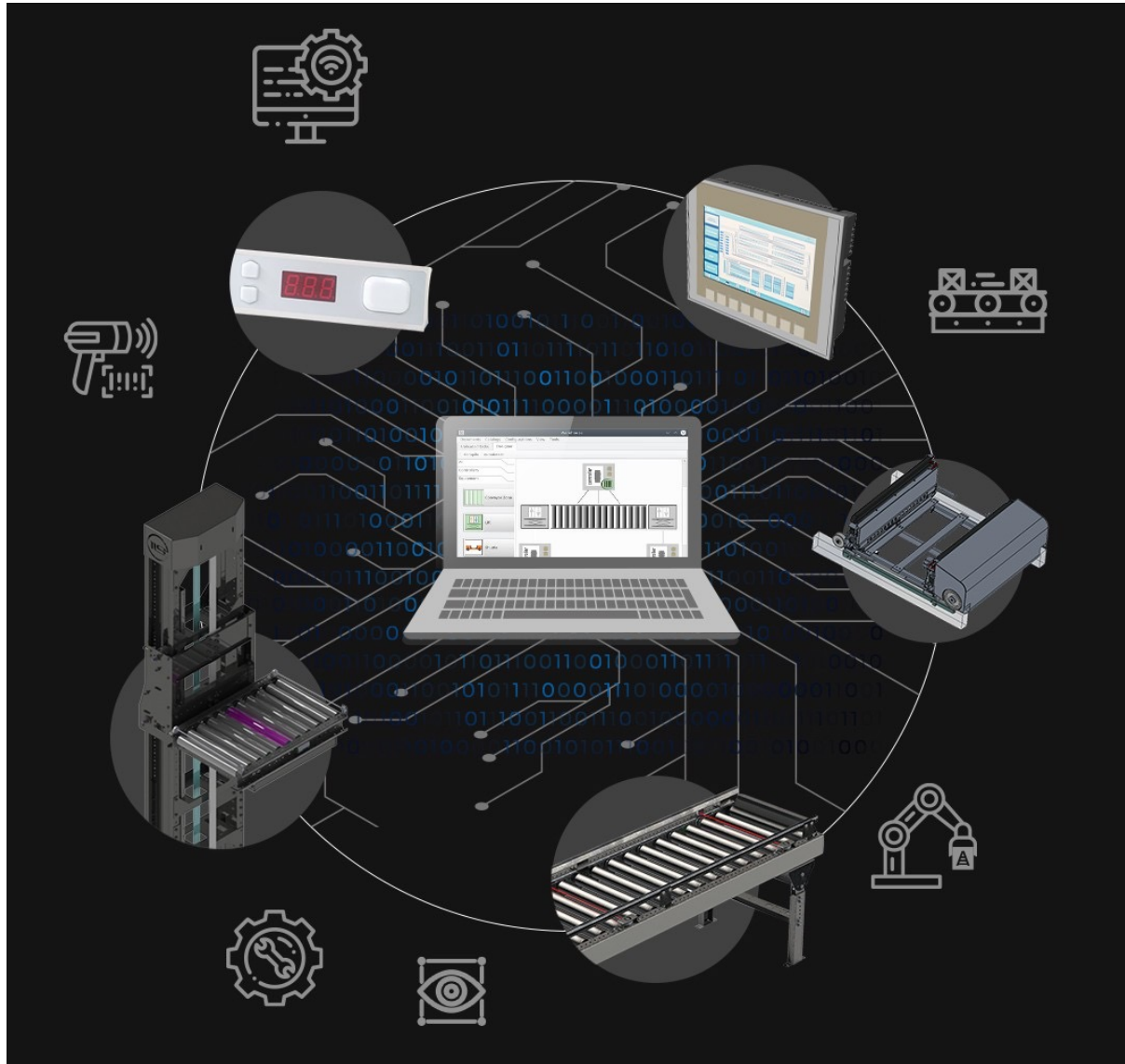
For industrial premises



For office premises



# SOFTWARE

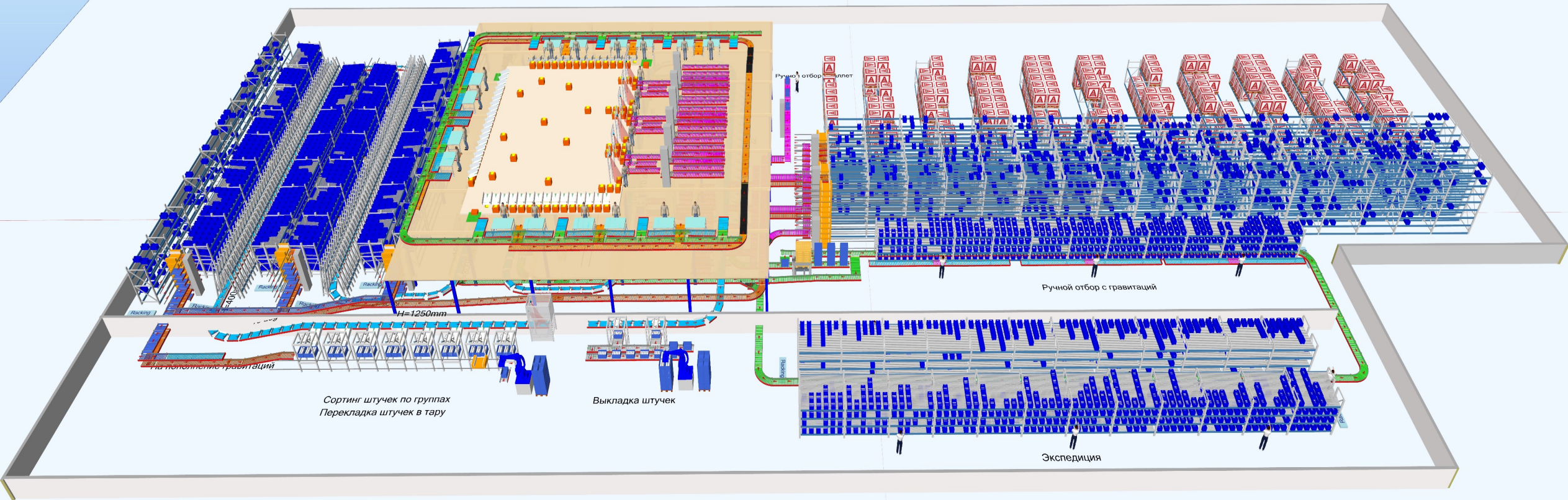


**PLUG AND PLAY system -  
it is easy to start and manage the  
modules of the automated system.**

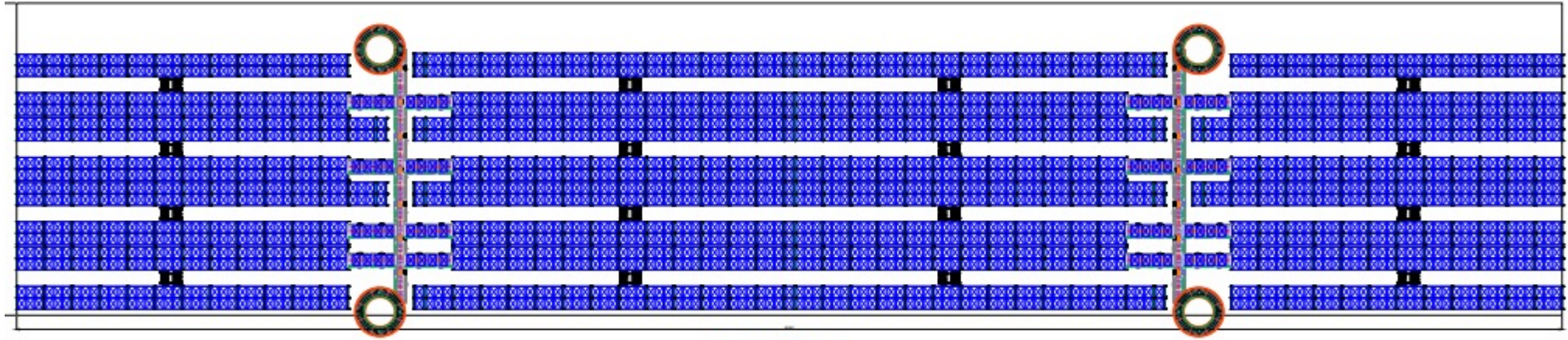
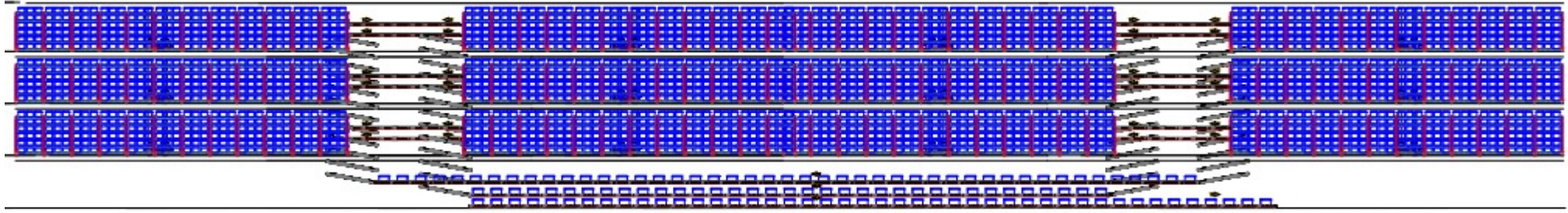
- Flexible configuration
- Equipment of all types
- All products in one application
- Cross-platform
- Flexible configuration



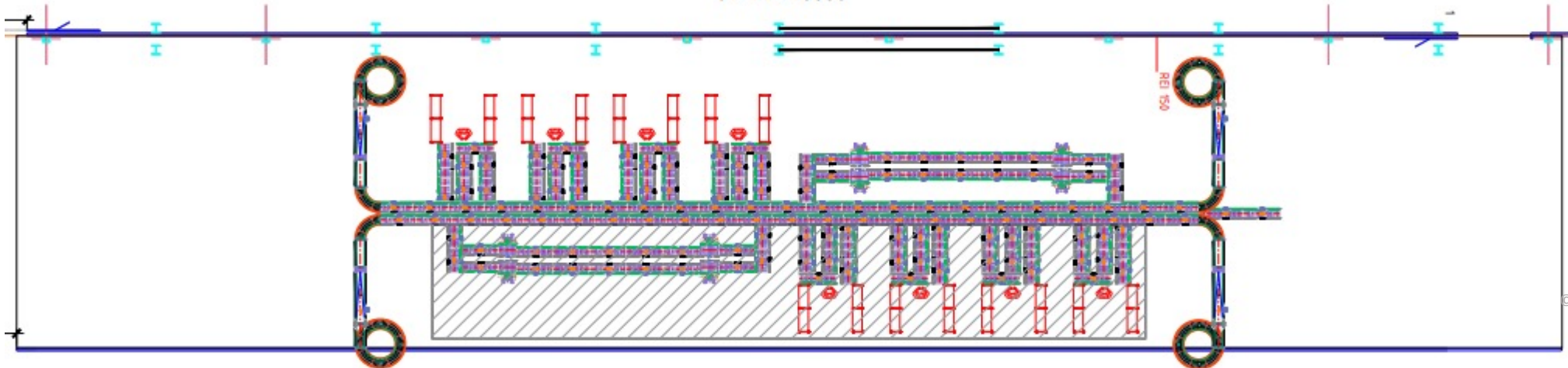
# PROJECT CASES





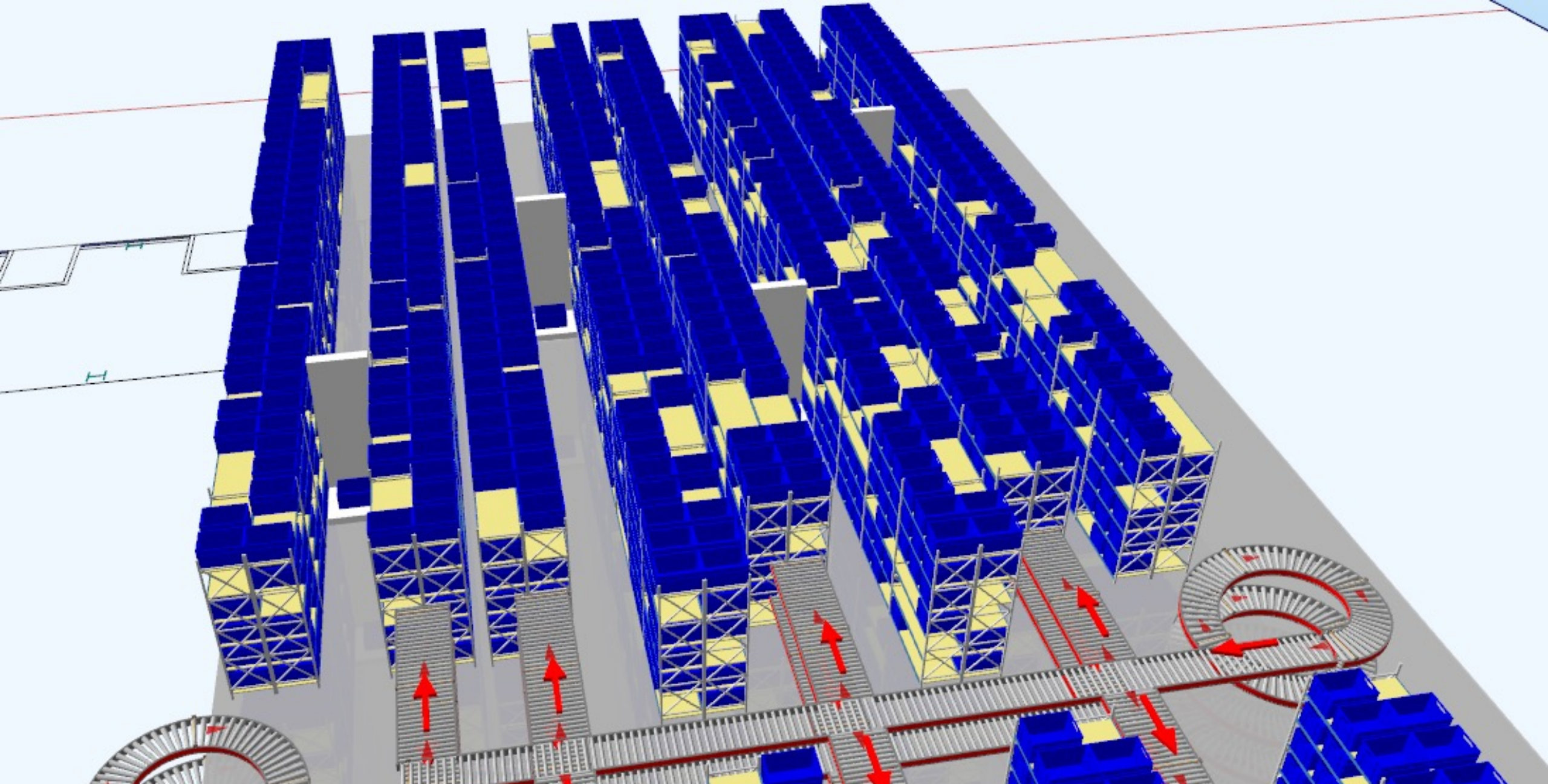


Лотків: 43056

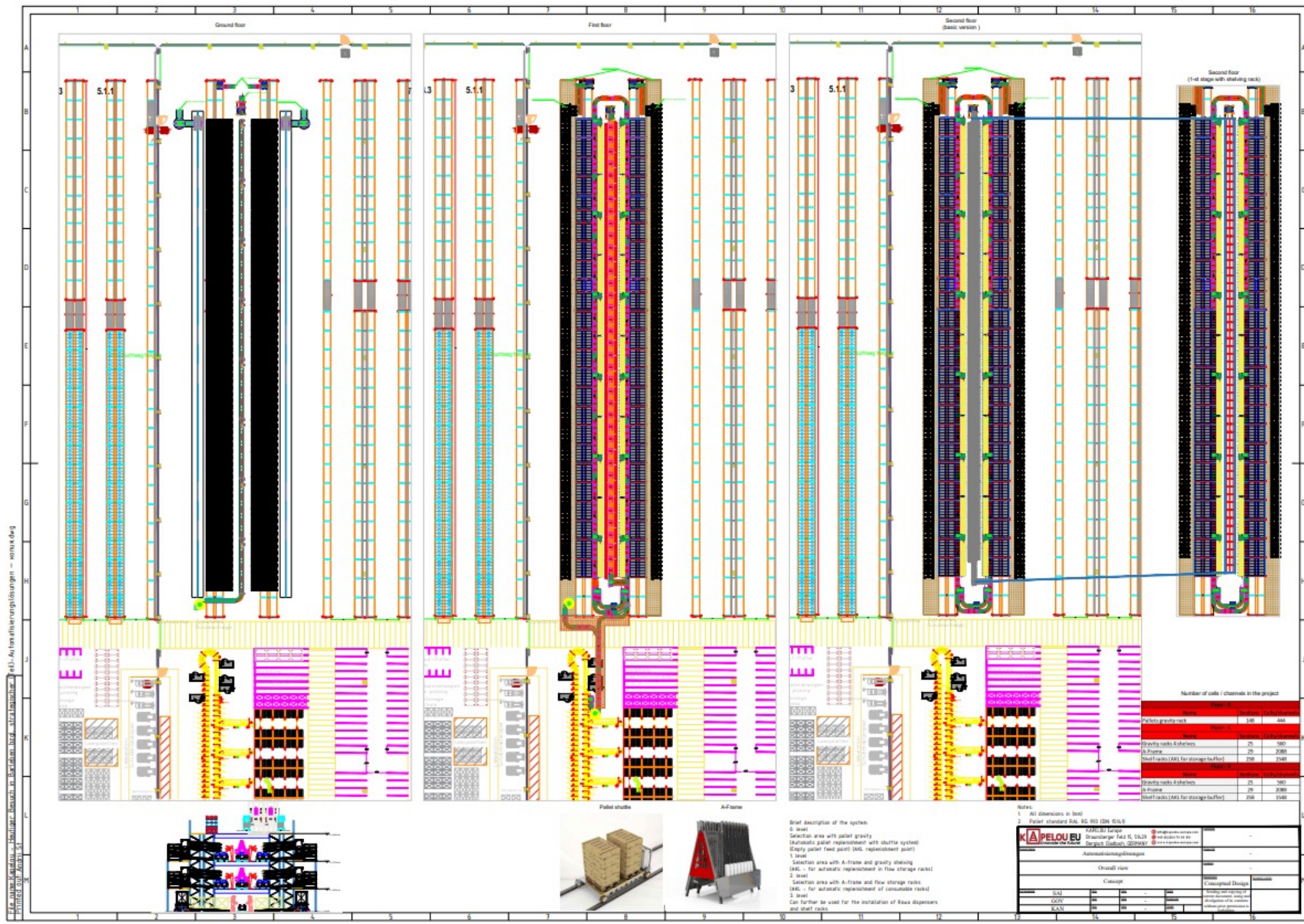


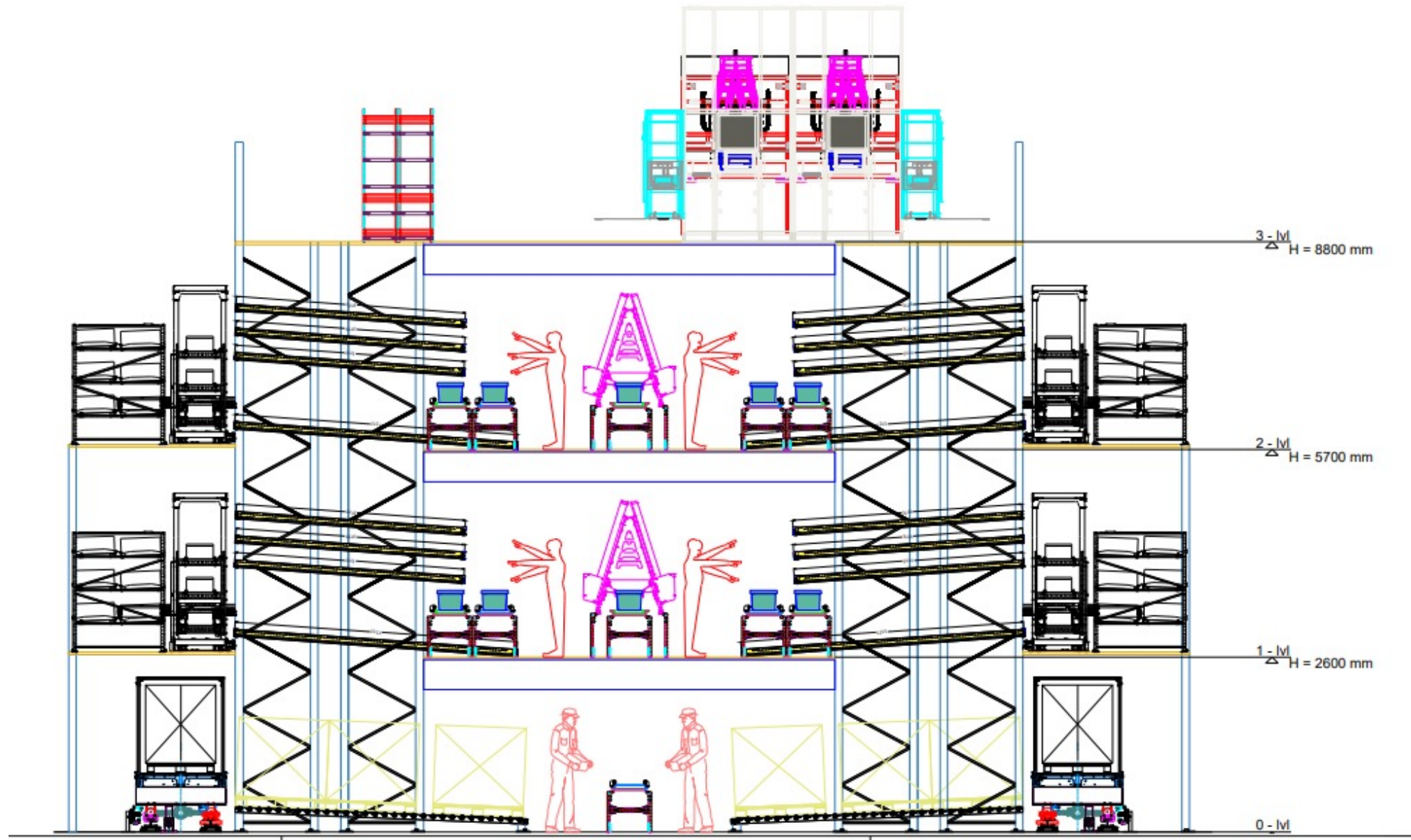


# SHUTTLE SYSTEM - GNOM











# SERVICE & MAINTENANCE

KAPELOU supports its customers throughout the life cycle of the automated system.

A service that gives peace of mind.



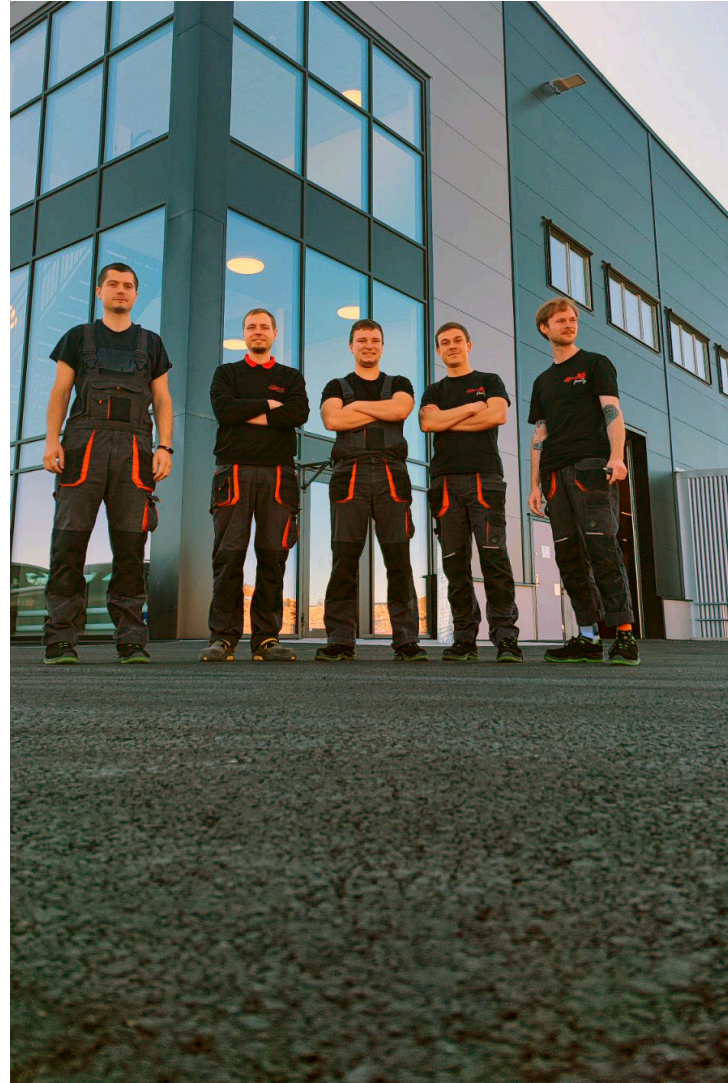
remote connection (VPN)



instructions on working with automated system



24/7 technical support



## **Spare parts & repairs**

- Spare and wearing parts from one source
- Individual packages of spare parts
- Reconstruction of equipment and modules

## **Service & installation**

- Preventive visits and scheduled maintenance
- On-site repair and support
- Service contracts
- Installation / dismantling
- Relocation of warehouse

## **Modernization & training**

- Modernization and updating of systems and modules
- Trainings for operators and service personnel
- Consulting on issues of modernization and renewal

# KAPELOU CONTACTS





Braunsberger Feld 15  
51429 Bergisch Gladbach

**Germany**

+49 (0) 2204 70 60 160  
info@kapelou-europe.com  
www.kapelou-europe.com



Mashinobudivna 44  
03067 Kijv

**Ukraine**

+38 (044) 339 99 18  
info@kapelou-europe.com  
www.kapelou-europe.com

## **COPYRIGHT**

© 2023 KAPELOU Europe GmbH, all rights reserved

The contents of this presentation are the property of KAPELOU Europe GmbH. Any information contained herein is to be treated as confidential and may not be disclosed without the written consent of KAPELOU Europe GmbH. The contents shown here are purely informative and do not represent any offer or assurance of properties.

## **COPYRIGHT**

© 2023 KAPELOU Europe GmbH, alle Rechte vorbehalten

Der Inhalt dieser Präsentation ist Eigentum der KAPELOU Europe GmbH. Alle hierin enthaltenen Informationen sind vertraulich zu behandeln und dürfen ohne die schriftliche Zustimmung von KAPELOU Europe GmbH nicht weitergegeben werden. Die hier dargestellten Inhalte sind rein informativ und stellen kein Angebot und keine Zusicherung von Eigenschaften dar.

